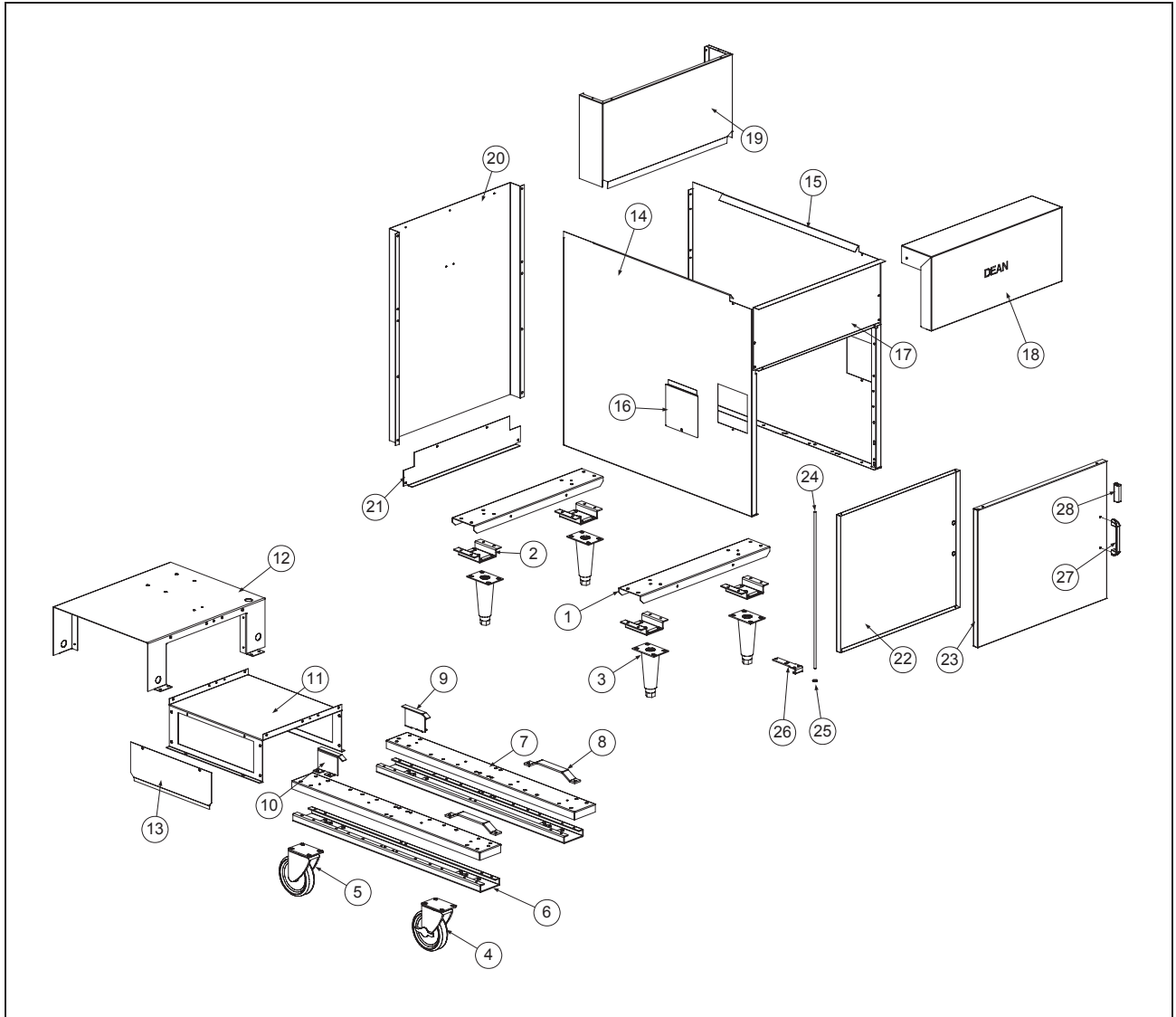


# DEAN MILLIVOLT GAS FRYERS

## CHAPTER 2: PARTS LIST

### 2.1 Cabinetry Components, Single Fryers



ITEM	PART #	COMPONENT
*	810-2793	Basket Hanger SR142 ( <b>Hook Over the Flue</b> ) Thumbscrews not needed
*	200-1360	Basket Hanger SR42 (Thumbscrew 809-0171, Cage Nut 826-1351)
*	210-1595	Basket Hanger SM-50 Single (Use 210-3131 for double)
*	210-5109	Joiner Strip SM20, SM50
1		<b>Channel, Base- Front &amp; Rear (Non-Filtration Single Fryers)</b>
*	12-0373	Channel, Base- Front & Rear- SR38G obsolete
*	200-1118	Channel, Base- Front & Rear- SR42G, SR52G, SM220G SM35G, SM40G, SM50G
*	200-5655	Channel, Base- Front & Rear-SR62G
*	200-3269	Channel, Base- Front & Rear- SM20G
*	200-2493	Channel, Base- Front & Rear- SM60G
*	200-2686	Channel, Base- Front & Rear- SM80G
2	823-3248	Support, Leg (Use Where Applicable)
3	806-5043	Leg, Adjustable- With Mounting Plate- All Millivolt Fryers

\* Not Illustrated

**DEAN MILLIVOLT GAS FRYERS  
CHAPTER 2: PARTS LIST**

**2.1 Cabinetry Components, Single Fryers (cont.)**

ITEM	PART #	COMPONENT
4	810-0357	Caster, Swivel- With Brake- <u>All Millivolt Fryers</u>
5	810-0356	Caster, Swivel- Without Brake- <u>All Millivolt Fryers</u>
<b>SUFF Base Components- SM Series With SUFF Filtration</b>		
6	823-3791	Support, Leg- Left- SUFF 50- <b>SM40G, SM50G</b>
*	823-3792	Support, Leg- Right- SUFF 50- <b>SM40G, SM50G</b>
*	823-3724	Support, Leg- Left & Right- SUFF 60/80- <b>SM60G, SM80G</b>
7	202-3529	Base, Channel- Right- SUFF 50- <b>SM40G, SM50G</b>
*	201-3259	Base, Channel- Left- SUFF 50- <b>SM40G, SM50G</b>
*	200-3459	Base, Channel- Right & Left- SUFF 60/80- <b>SM60G, SM80G</b>
8	210-3636	Slide, Front- SUFF Filter, All Systems
9	823-3751	Slide, Rear, Left- SUFF Filter- <b>SM60G, SM80G</b>
*	823-3788	Slide, Rear, Left- SUFF Filter- <b>SM50G</b>
10	823-3752	Slide, Rear, Right- SUFF Filter- <b>SM60G, SM80G</b>
*	823-3789	Slide, Rear, Right- SUFF Filter- <b>SM50G</b>
11	200-3522	Base, Lower Filter- SUFF 50- <b>SM40G, SM50G</b>
*	200-3494	Base, Lower Filter- SUFF 60- <b>SM60G</b>
*	200-3403	Base, Lower Filter- SUFF 80- <b>SM80G</b>
12	823-3783	Base, Upper Filter- SUFF 50- <b>SM40G, SM50G</b>
*	823-3765	Base, Upper Filter- SUFF 60- <b>SM60G</b>
*	823-3745	Base, Upper Filter- SUFF 80- <b>SM80G</b>
13	200-3524	Cover, Electrical Access- SUFF 50- <b>SM40G, SM50G</b>
*	200-3461	Cover, Electrical Access- SUFF 60- <b>SM60G, SM80G</b>
<b>Side Panel, Left</b>		
*	12-0380-1	Side Panel, Left- Painted Aluminum- <b>SR38G obsolete</b>
*	201-1137SP	Side Panel, Left- Painted Aluminum- <b>SR42G, SR52G (Use 202-5693SP for SR62G)</b>
*	211-3329	Side Panel, Left- <b>SM20G</b>
*	201-2858	Side Panel, Left- Painted CRS- <b>SM35G, SM50G</b>
*	201-1299	Side Panel, Left- Painted CRS- <b>SM50GDD</b>
*	211-2076	Side Panel, Left- S/S- <b>SR42G, SM35G, SM50G (Use 211-5693 for SR62G)</b>
*	211-2532	Side Panel, Left- S/S- <b>SM60G, SM80G</b>
<b>Side Panel, Right</b>		
*	12-0380-2	Side Panel, Right- Painted Aluminum- <b>SR38G obsolete</b>
*	202-1137	Side Panel, Right- Painted Aluminum- <b>SR42G, SR52G (Use 202-5693SP for SR62G)</b>
*	212-3329	Side Panel, Right- <b>SM20G</b>
*	202-2858	Side Panel, Right- Painted CRS- <b>SM35G, SM50G</b>
*	202-1299	Side Panel, Right- Painted CRS- <b>SM50GDD</b>
*	212-2076	Side Panel, Right- S/S- <b>SR42G, SM35G, SM50G (Use 212-5693 for SR62G)</b>
*	212-2532	Side Panel, Right- S/S- <b>SM60G, SM80G</b>
16	210-2804	Duct, Door Access- S/S- <u>All Millivolt Fryers</u>
*	200-1471	Duct, Door Access- Painted- <u>All Millivolt Fryers</u>
17	12-0311	Back, Control Panel- <b>SR38G obsolete</b>
*	200-1121	Back, Control Panel- <b>SR42G, SR52G, SM220G (Use 200-3003 for SR62G)</b>
*	200-1676	Back, Control Panel- <b>SM35G, SM40G, SM50G</b>
*	200-3558	Back, Control Panel- <b>SM50GDD</b>
*	200-2856	Back, Control Panel- <b>SM60G</b>
*	200-1213	Back, Control Panel- <b>SM60G</b>
*	200-3004	Back, Control Panel- <b>SM80G</b>
18	12-0309-2	Top Cap (Front Canopy)- <b>SR38G obsolete</b>
*	210-1141	Top Cap (Front Canopy)- <b>SR42G, SR52G, SM35G, SM40G, SM50G</b>
*	07-0132	Top Cap (Front Canopy)- <b>SM20G obsolete</b>
*	824-1033	Top Cap (Front Canopy)- <b>SM220G</b>

\* Not Illustrated

**DEAN MILLIVOLT GAS FRYERS  
CHAPTER 2: PARTS LIST**

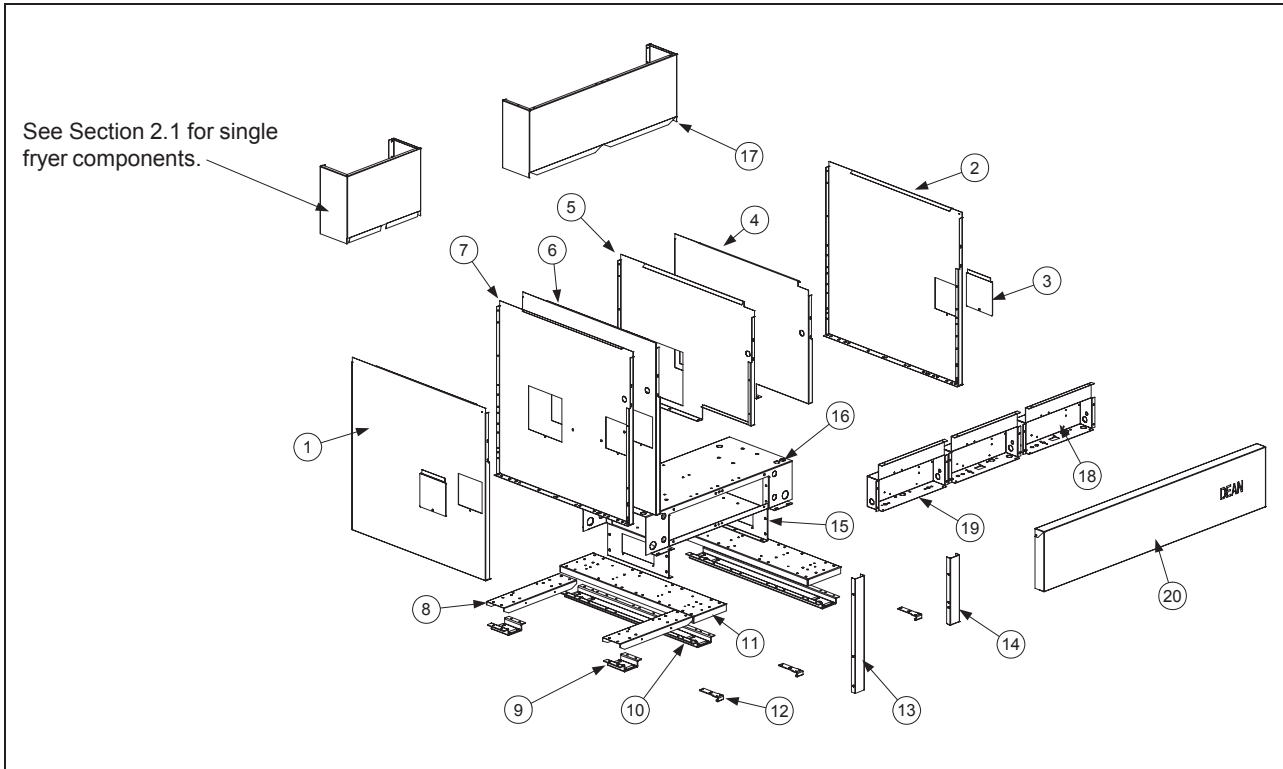
**2.1 Cabinetry Components, Single Fryers (cont.)**

ITEM	PART #	COMPONENT
*	210-3419	Top Cap (Front Canopy)- <b>SM50GDD</b>
*	210-2821	Top Cap (Front Canopy)- <b>SM60G, SR62G</b>
*	210-2811	Top Cap (Front Canopy)- <b>SM80G</b>
19	12-0366-2	Flue Cap- <b>SR38G</b> <i>obsolete</i>
*	823-4175	Flue Cap- <b>SR42G, SR52G (After Feb. 2003)</b> <i>obsolete</i> Use 230-0031
*	823-4437	Flue Cap- <b>SR62G</b>
*	823-3467	Flue Cap- <b>SM35G, SM40G (SR42G, SR52G Prior To Feb. 2003)</b> <i>obsolete</i>
*	823-3700	Flue Cap- <b>SM20G</b>
*	823-3702	Flue Cap- <b>SM220G</b>
*	823-3521	Flue Cap- <b>SM50G</b>
*	823-3575	Flue Cap- <b>SM50GDD</b>
*	823-3635	Flue Cap- <b>SM60G</b>
*	823-3512	Flue Cap- <b>SM80G</b>
20	12-0401	Back, Upper Cabinet- <b>SR38G</b> <i>obsolete</i>
*	200-1123	Back, Upper Cabinet- <b>SR42G, SR52G, SM35G, SM50G</b>
*	200-1377	Back, One-Piece Cabinet- <b>SM35G, SM50G</b>
*	200-1674	Back, Upper Cabinet- <b>SM50G (SUFF), SM220G</b>
*	200-1213	Back, Upper Cabinet- <b>SM60G / SR62G</b>
*	200-2683	Back, Upper Cabinet- <b>SM80G</b>
21	12-0402	Back, Lower Cabinet- <b>SR38G</b> <i>obsolete</i>
*	200-1126	Back, Lower Cabinet- <b>SM35G, SM50G, SM50GDD</b>
*	200-1327	Back, Lower Cabinet- <b>SM60G</b>
*	210-2684	Back, Lower Cabinet- <b>SM80G</b>
<b>Door Assembly Components</b>		
22	200-3807	Panel, Inner Door- <b>SM20G</b>
*	200-1379	Panel, Inner Door- <b>SM220G, SM35G, SM40G, SM50G</b>
*	200-1185	Panel, Inner Door- <b>SM60G</b>
*	200-2688	Panel, Inner Door- <b>SM80G</b>
23	12-0308-2	Panel, Door- <b>SR38G</b> <i>obsolete</i>
*	210-4770	Panel, Door- <b>SR42G, SR52G (Assembly 106-3150SP)</b>
*	210-5642	Panel, Door- <b>SR62G (Assembly 106-3444SP)</b>
*	106-4728	Door Assembly, Right with Liner- <b>SM50</b>
*	210-3805	Panel, Outer Door- <b>SM20G (Assembly 106-2482SP)</b>
*	210-2869	Panel, Outer Door- <b>SM220G, SM35G, SM40G, SM50G (Assembly 106-1754SP)</b>
*	210-1424	Panel, Outer Door- <b>SM60G</b>
*	210-1151	Panel, Outer Door- <b>SM80G (Assembly 106-1698SP)</b>
24	200-1301	Pin, Door- <u>All Millivolt Fryers</u> (Use 826-1343 for Springs qty. 10)
*	106-1698SP	Pin, Door Assembly- All Millivolt Fryers (short)
25	809-0413	Spacer, Nylon- <u>All Millivolt Fryers</u>
26	200-1307	Hinge, Door- Lower- <b>All SR Series Fryers</b>
*	200-1675	Hinge, Door- Lower- <b>All SM Series Fryers</b>
27	810-0180	Handle, Door- Chrome- <b>All SM Series Fryers</b>
*	809-0918	Screw, #10-24 x 1/2" (Use With 810-2105)
*	809-0191	Washer, Lock 1/4" (Use With 810-2105)
*	810-1422	Handle, Wireform- Door- <b>SR42G, SR52G (Use 810-2030 before Jan. 03)</b>
*	826-1379	Screw, #10 x 1/2" Round Phillips (Qty: 10) (Use With 810-1422)
28	810-0066	Catch, Magnetic Door- <u>All Millivolt Fryers</u>
*	823-3225	Splash Guard <b>42's &amp; 50's (Use 823-4767 for 60's &amp; 80's)</b>
*	200-3663	Striker Plate all models except <b>SR42</b>
*	210-2897	Striker Plate <b>SR42</b>
*	803-0197	Fryers Friend Cleanout Tool

\* Not Illustrated

**DEAN MILLIVOLT GAS FRYERS  
CHAPTER 2: PARTS LIST**

**2.2 Cabinetry Components, Multi-Battery Frying Systems**



ITEM	PART #	COMPONENT
1	211-3261	Side, Left- S/S- (Use When SM20G Is On End)
*	211-2787	Side, Left- S/S- (Use When SM50G Is On End)
*	201-3369	Side, Left- Painted (Use When SM50G is On End)
2	212-3261	Side, Right- S/S- (Use When SM20G Is On End)
*	212-2787	Side, Right- S/S- (Use When SM50G Is On End)
*	202-3369	Side, Right- Painted (Use When SM50G is On End)
3	210-2804	Duct, Door Access- <u>All SM Series Multi-Battery Fryers</u>
4	202-2799	Panel, Inner- SUFF Base-Right- <b>SM50G</b>
5	201-2799	Panel, Inner- SUFF Base-Left- <b>SM50G</b>
6	202-3268	Panel, Inner- Right- <b>SM20G To SM50G</b>
7	201-3268	Panel, Inner- Left- <b>SM20G To SM50G</b>
8	200-1148	Base Channel, Front & Rear- <b>SM220G, SM50G (See Section 2.1 For Additional Single Fryer Base Channel Components)</b>
*	200-3154	Channel, Double- Front & Rear- <b>SM80G Systems (4-Battery)</b>
9	823-3248	Support, Leg- <u>All SM 60/80 Series Multi-Battery Fryers With UFF</u>
10	823-3539	Support, Leg- <u>All SM 20/50 &amp; 50 Series Multi-Battery Fryers With UFF</u>
11	200-2783	Channel, Filter Base- <u>All SM 20/50 Series UFF-Equipped</u>
*	200-1198	Channel, Filter Base- <u>All SM60G-80G Series UFF-Equipped</u>
12	200-1675	Bracket, Lower Hinge- <u>All SM Series UFF-Equipped</u>
13	200-1393	Channel, Lower Joiner- <u>All SM 20/50 &amp; 50 Series Multi-Battery Fryers With UFF</u>
14	200-2308	Post, Door- <u>All SM 20/50 &amp; 50 Series Multi-Battery Fryers With UFF</u>

\* Not Illustrated

**DEAN MILLIVOLT GAS FRYERS  
CHAPTER 2: PARTS LIST**

**2.2 Cabinetry Components, Multi-Battery Frying Systems**

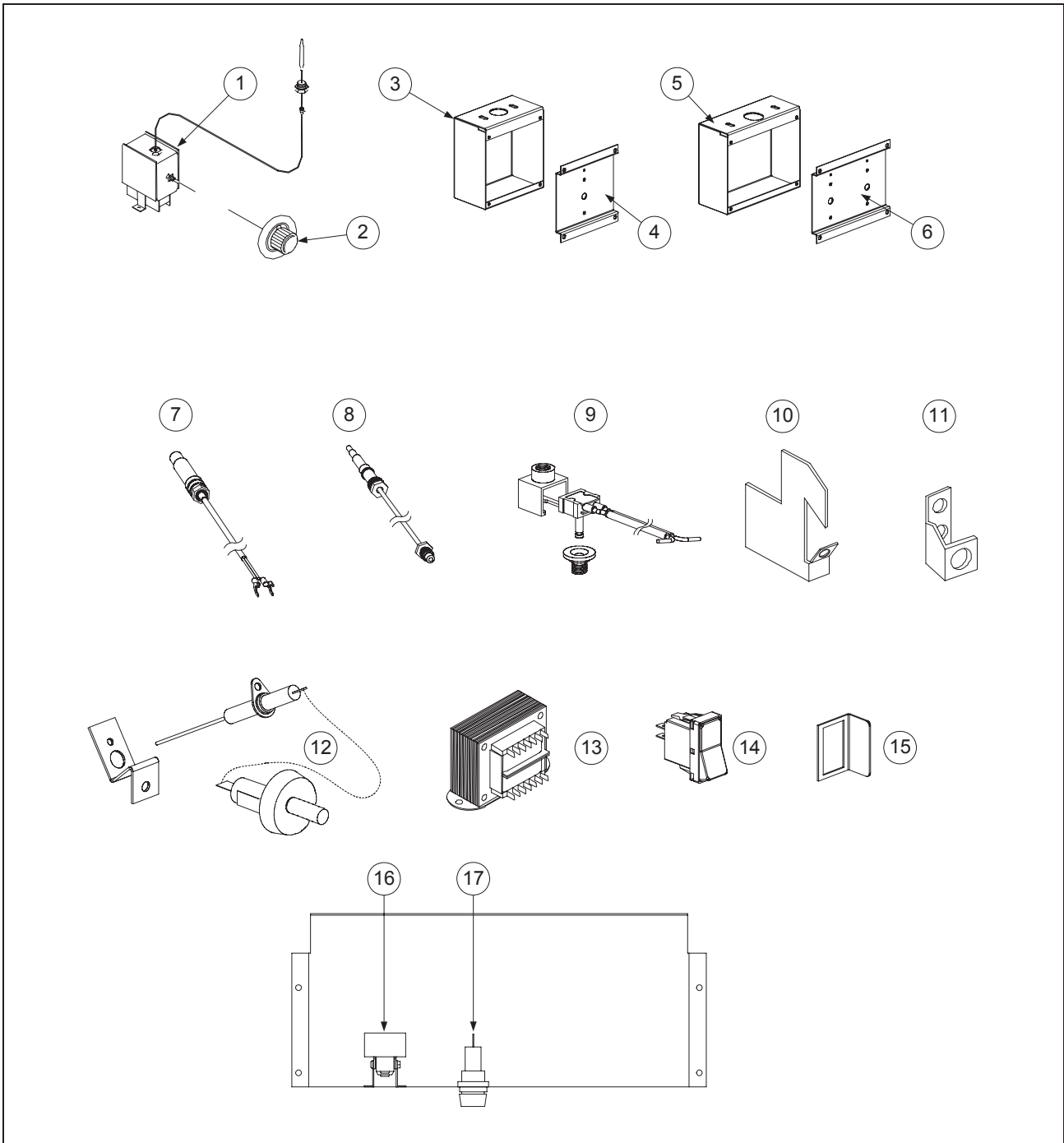
ITEM	PART #	COMPONENT
15	200-2830	Base, Filter Frame- Lower- <u>SM 20/50 &amp; 50 Series Multi-Battery Fryers w/ UFF</u>
16	200-2785	Base, Filter Frame- Upper- <u>SM 20/50 &amp; 50 Series Multi-Battery Fryers w/ UFF</u>
17	823-3634	Fluecap, <b>SM250G</b>
*	823-3705	Fluecap, <b>SM20/20/50G</b>
*	823-3516	Fluecap, <b>SM260G</b>
*	823-3659	Fluecap, <b>SM280G</b>
18	824-0995	Wireway, Control Panel- <b>SM50G</b>
*	824-0993	Wireway, Control Panel- <b>SM60G</b>
*	824-1128	Wireway, Control Panel- <b>SM80G</b>
19	824-1025	Wireway, Control Panel- <b>SM220G</b>
*	824-1026	Wireway, Control Panel- <b>SM20G</b>
20	824-1029	Topcap- <b>SM20/20/50/50G</b>
*	824-1030	Topcap- <b>SM20/50/50/20G</b>
*	824-1028	Topcap- <b>SM20/20/50G</b>
*	824-1177	Topcap- <b>SM20/20/50G 3-Battery</b>
*	824-0999	Topcap- <b>SM250G</b>
*	824-1000	Topcap- <b>SM350G</b>
*	824-1001	Topcap- <b>SM450G</b>
*	210-2822	Topcap- <b>SM260G</b>
*	210-2824	Topcap- <b>SM360G</b>
*	210-2825	Topcap- <b>SM460G</b>
*	824-1009	Topcap- <b>SM280G</b>
*	824-1010	Topcap- <b>SM380G</b>
*	824-1011	Topcap- <b>SM480G</b>
*	210-5109	Joiner Strip- <b>SM22G</b>
*	210-3182	Joiner Strip- <b>SM50/60, SR62G</b>
*	210-1679	Joiner Strip- <b>SM220</b>
*	210-2681	Joiner Strip- <b>SR42</b>
*	KIT00092SP	Air Shutter Kit
<b>ACCESSORIES</b>		
*	803-0271	Basket, Fry ( <b>SM20, SM40, SM50, SR42 and SR52</b> )
*	803-0304	Basket, Fry ( <b>SM60 and SM80</b> )
*	803-0277	Screen, Fine Mesh <b>SR42 (Use 803-0149 for SR62, SM60)</b>
*	803-0280	Screen, Fine Mesh <b>SM80</b>
*	803-0273	Rack, Basket Support <b>SR42</b>
*	803-0327	Grid Assembly <b>SM20</b> Basket Rack
*	210-3911	Hanger, Basket <b>20/50/MC</b>
*	210-3368	Hanger, Basket <b>SM20 (Hooks over the Flue)</b>
*	210-1595	Hanger, Basket <b>SM35/40/50 SS 15½"</b>
*	200-1360	Hanger, Basket (Over flue style) <b>SR42/52 CR 15½"</b>
*	210-2737SP	Hanger, Basket <b>SR62/SM60/SM160G SS 20" (Hooks over Flue)</b>
*	810-2793	Hanger, Wire Basket Single <b>SR42/50</b>
*	810-2794	Hanger, Wire Basket Double <b>SR42/50/62</b>
*	106-2631SP	Tray Assembly, Sediment <b>SM60</b>
*	809-0171	Thumbscrew (Nut 826-1351 qty. 10)
*	106-1637SP	Frypot Cover <b>SR42/52, SM50</b>
*	106-1479SP	Frypot Cover <b>SM60</b>
*	106-2470	Frypot Cover <b>SM80</b>

\* Not Illustrated

**DEAN MILLIVOLT GAS FRYERS  
CHAPTER 2: PARTS LIST**

**2.3 Component Box Components and Related Components (CE and Domestic)\***

\* Components are applicable to all Millivolt fryers covered in this manual unless otherwise noted.



**DEAN MILLIVOLT GAS FRYERS  
CHAPTER 2: PARTS LIST**

**2.3 Component Box Components and Related Components (CE and Domestic- cont.)**

ITEM	PART #	COMPONENT
1	826-2013	Thermostat, Sunne <i>(Use 807-1692 for CE)</i>
*	810-2047	Spring, Spacer- Thermostat Capillary Bulb
*	210-1302	Clamp, Thermostat/High Limit Capillary Bulb <i>(Use 210-1433 for 2 hole)</i>
*	200-1320	Mounting Bracket, Thermostat & High-Limit
2	810-2035	Knob, Thermostat <i>(Use 816-0139 for CE)</i>
3	200-1618	Box, Thermostat- Single
4	200-3217	Cover, Thermostat Box- Single
5	200-3277	Box, Thermostat- Dual <i>(Used in 20/50 Combination Systems)</i>
6	200-3906	Cover, Thermostat Box- Dual <i>(Used in 20/50 Combination Systems)</i>
7	810-2033	Thermopile <i>(Use 807-3565 for CE)</i>
8	810-1152	Thermocouple <b>(CE ONLY)</b> <i>(Use 812-1284 for Assembly)</i>
9	106-1768SP	ECO Connector (Honeywell Valves Only- <b>CE ONLY</b> )
*	106-1879	ECO Connector (Robertshaw Valves Only- <b>CE ONLY</b> )
10	200-5479	Bracket, Pilot Thermocouple
11	810-2401	Bracket, Thermopile
12	810-1001	Piezo Ignitor (Trigger) <i>(Wire Lead-807-3650) (Assembly-44970SP)</i>
*	200-1868	Piezo Bracket
*	807-3540	Electrode, Piezo CE <i>(Use 812-1532 for modified Electrode)</i>
13	807-1999	Transformer, Dual Voltage CE- Filtration System <b>(CE ONLY)</b>
*	807-0800	Transformer, 120/24 VAC- Filtration System
14	807-3580	Switch, Rocker- Manual Filter Power
15	210-2786	Guard, Switch (Optional- For Item 10)
16	807-3516	High-Limit Thermostat- Automatic Reset 435° F SM20/35,SR40/42
*	807-3560	High-Limit Thermostat- Manual Reset 410° F <b>(CE)</b>
*	807-3680	High-Limit Thermostat- Manual Reset 450° F
*	810-2046	Spring, Spacer- High Limit Capillary Bulb
17	807-1321	Fuse Holder, Buss
*	2747	Fuse Holder, Slot-head—Safety <b>(CE ONLY)</b>
*	807-3592	Fuse 2A Slow-Blow (230V Systems)
*	807-3750	Fuse 5A (120V Systems)

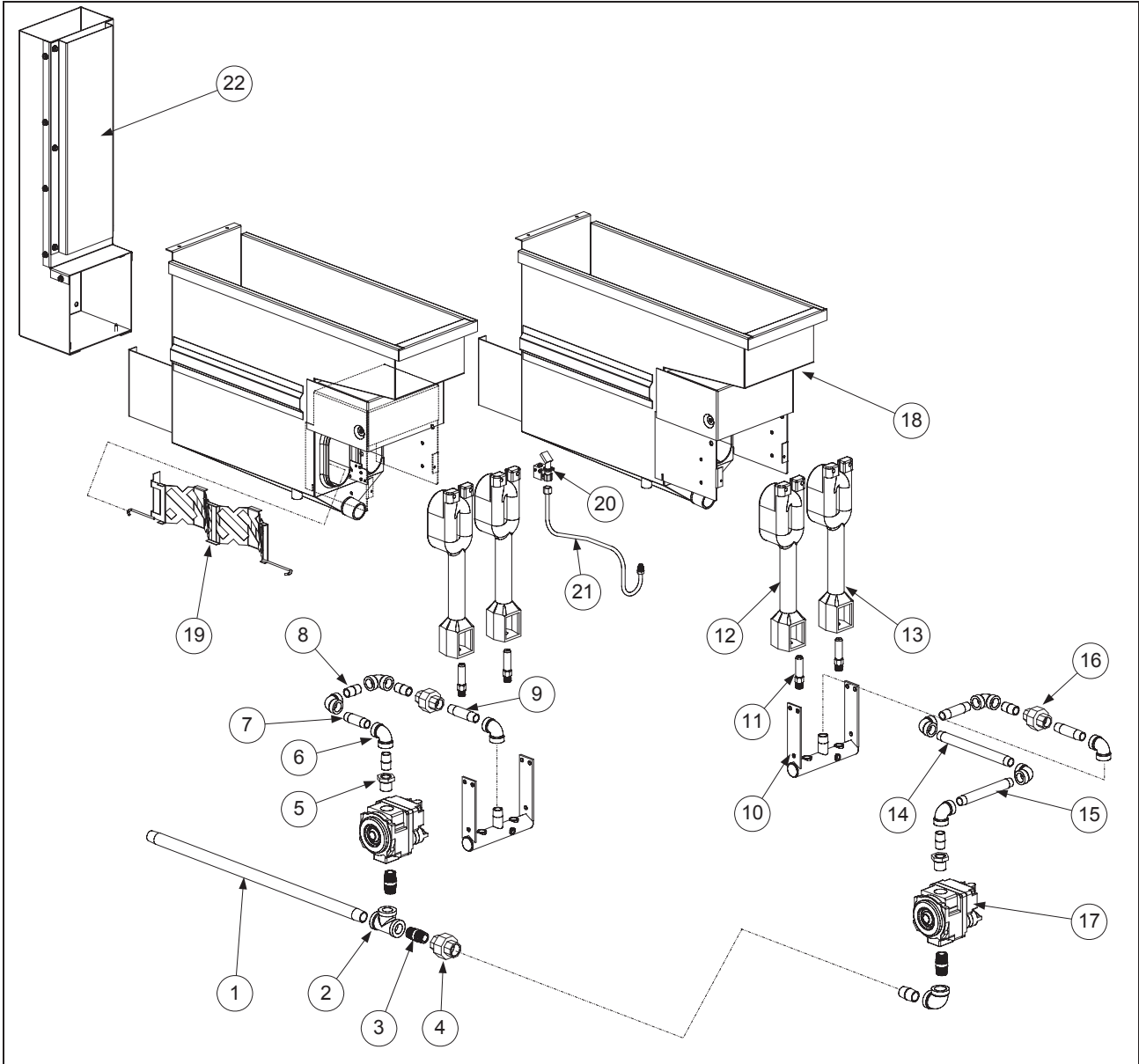
\* Not Illustrated



**DEAN MILLIVOLT GAS FRYERS  
CHAPTER 2: PARTS LIST**

**2.4 Frypot and Burner System Components**

**2.4.1 SM220 and SM20/20/~ Systems**



ITEM	PART #	COMPONENT
1	813-0737	Nipple, 1/2" NPT x 21" BM
*	810-2043	Clamp, Pipe- 1/2" BM Pipe
*	809-0805	Bolt, Pipe Clamp- 1/4" -20 x 1/2" Hex
*	200-1450	Bracket, Gas-Supply Clamp Support (UFF-Equipped Systems)

\* Not Illustrated



**DEAN MILLIVOLT GAS FRYERS  
CHAPTER 2: PARTS LIST**

**2.4.1 SM220 and SM20/20/~ Systems (cont.)**

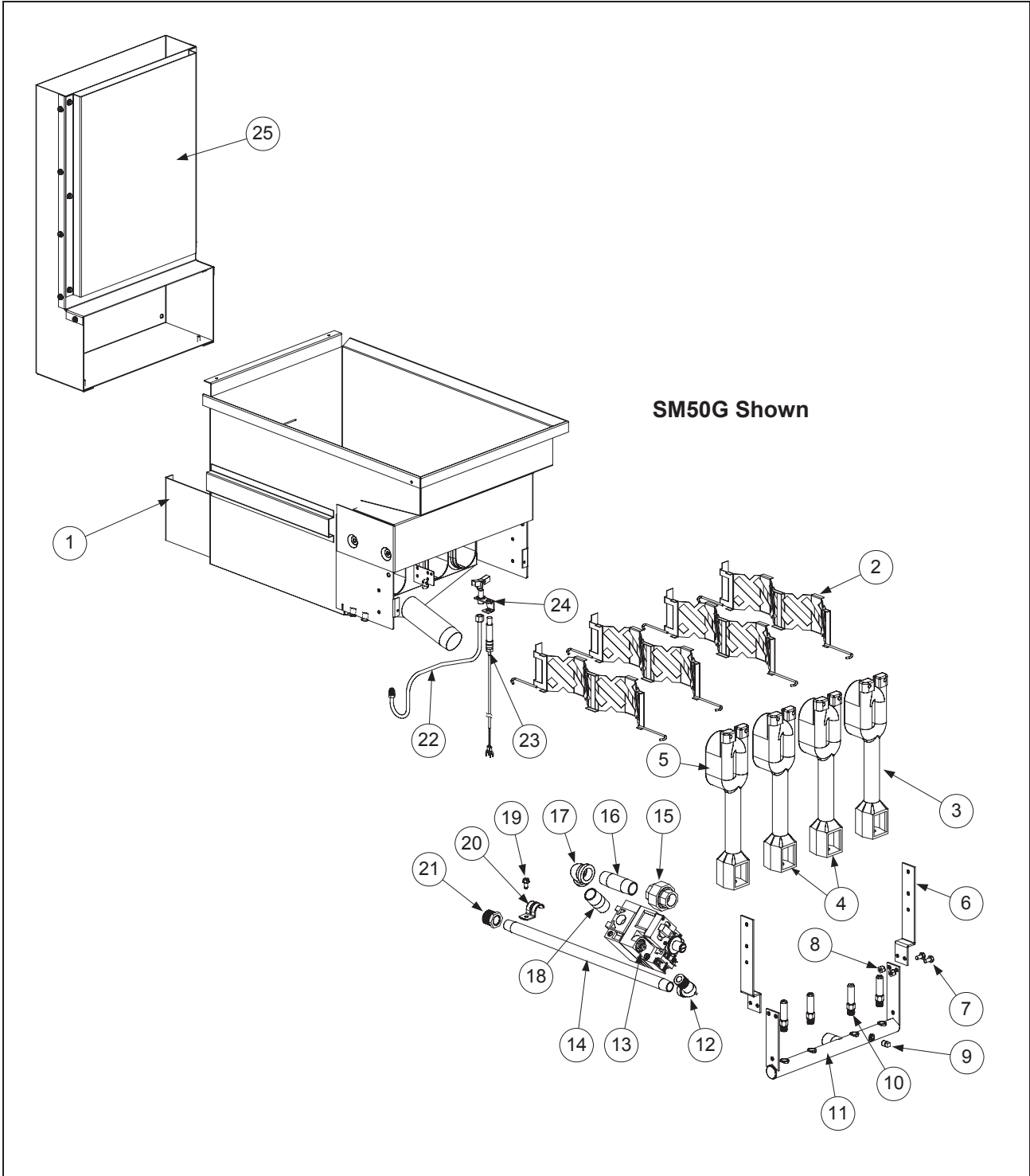
ITEM	PART #	COMPONENT
2	813-0003	Tee, 1/2" NPT BM
3	813-0087	Nipple, 1/2" NPT x 1-1/2" BM
4	813-0173	Union, 1/2" NPT BM
5	813-0780	Bushing, 3/8" NPT x 1/2" BM
6	813-0631	Elbow, 3/8" NPT 90° BM
7	813-0676	Nipple, 3/8" NPT x 2" BM
8	813-0625	Nipple, 3/8" NPT x Close BM
9	813-0649	Nipple, 3/8" NPT x 2-1/2" BM
10	810-2352	Manifold, Gas- <b>SM20G</b>
*	200-1615	Bracket, Manifold Mounting
11	810-2050	Orifice, Natural- #44 (2.18 mm)- <b>Domestic/International</b>
*	810-0710	Orifice, LP- #54 (1.40 mm)- <b>Domestic/International</b>
*	810-2060	Orifice, G20-G25- (2.40 mm)- <b>CE Only</b>
*	810-2059	Orifice, G31- (1.51 mm)- <b>CE Only</b>
12	810-2151	Burner, Left
13	810-2150	Burner, Right
*	200-1374	Bracket, Burner Mounting- <b>SM20G</b>
*	200-1331	Shield, Burner Heat- <b>SM20G</b>
14	813-0668	Nipple, 3/8" NPT x 7" BM
15	813-0782	Nipple, 3/8" NPT x 5" BM
16	813-0781	Union, 3/8" NPT BM
17	807-3645	Valve, Gas- Natural (Robertshaw MV) 1/2" in x 3/4" out
*	807-1603	Valve, Gas- Natural Honeywell 1/2" in x 1/2" out
*	810-2036	Valve, Gas- Natural Honeywell 1/2" in x 3/4" out
*	807-2122	Valve, Gas- Natural <b>CE</b> Honeywell
*	810-2399	Valve, Gas- Propane (Robertshaw MV)
*	807-1604	Valve, Gas- Propane Honeywell
*	807-2121	Valve, Gas- Propane <b>CE</b> Honeywell
*	810-0975	Knob, Gas Valve Honeywell
*	810-0691	Vent Tube 4" (Use 810-1166 for <b>CE</b> 3.86")
18	826-1874	Frypot Assembly- <b>SM20G</b> - M/S <i>obsolete use 826-1875</i>
*	826-1875	Frypot Assembly- <b>SM20G</b> - S/S
19	200-5175	Diffuser, Burner-Tube- <b>SM20G</b>
20	810-2158	Pilot Burner- <b>SM20G</b> - Natural(0.18 Orifice) ( <b>Use 810-2526 for LP</b> )
*	810-2689	Pilot Assembly Honeywell w/ Piezo- Natural ( <b>Use 810-2690 for LP</b> )
*	106-4968	Pilot Assembly w/ Piezo-Natural <b>SM20G</b>
21	810-0703	Gas Line, Pilot Supply- 1/4" x 17-1/2" (CE -810-1172 - 1/4" x 22")
*	810-2602	Gas Line, Pilot Supply- 1/4" x 25"
22	106-1583SP	<b>Flue Assembly- SM20G</b>
*	200-1342	Shield, Flue Heat- <b>SM20G</b>
*	200-1344	Front, Flue Box- <b>SM20G</b>
*	200-1351	Rear, Flue Box- <b>SM20G</b>
*	200-3081	Air Shutter (Use KIT00092SP for Air Shutter Kit)

\* Not Illustrated

SM 20 series began using Honeywell gas valves in July 2003.

DEAN MILLIVOLT GAS FRYERS  
CHAPTER 2: PARTS LIST

2.4.2 SR Series, SM35G, SM40G and SM50G Systems



**DEAN MILLIVOLT GAS FRYERS  
CHAPTER 2: PARTS LIST**

**2.4.2 SR Series, SM35G, SM40G and SM50G Systems (cont.)**

ITEM	PART #	COMPONENT
1	12188-1	Frypot- M/S (After 6/98)- <b>SR38G</b> <i>obsolete</i>
*	12188-2	Frypot- S/S (After 6/98)- <b>SR38G</b> <i>obsolete</i>
*	12082NV	Frypot- M/S (P&S Prior to 6/98)- <b>SR38G</b> <i>obsolete</i>
*	12202-1	Frypot- M/S (Japan/Singapore)- <b>SR38G</b> <i>obsolete</i>
*	12202-2	Frypot- S/S (Japan/Singapore)- <b>SR38G</b> <i>obsolete</i>
*	826-1865	Frypot- S/S- <b>SR42G</b> ( <i>Began using 1" drain Mar. 2003</i> )
*	826-1871	Frypot- S/S- <b>SR52G, SM50G</b>
*	826-1867	Frypot- S/S- <b>SM35G, SM40G</b>
2	210-5185	Diffuser, Burner Tube- <b>SR38G, SR42G, SM35G, SM40G</b>
*	210-5175	Diffuser, Burner Tube- <b>SM50G</b>
*	210-5216	Diffuser, Burner Tube- <b>SR52G</b>
3	810-2150	Burner, Right- <b>SR52G, SM50G</b>
*	810-2039	Burner, Right- <b>SR38G, SR42G, SM35G, SM40G</b>
4	810-2149	Burner, Center- <b>SR52G, SM50G</b>
*	810-2038	Burner, Center- <b>SR38G, SR42G, SM35G, SM40G</b>
5	810-2151	Burner, Left- <b>SR52G, SM50G</b>
*	810-2037	Burner, Left- <b>SR38G, SR42G, SM35G, SM40G</b>
*	200-1329	Bracket, Burner Mounting- <b>SR52G, SM50G</b>
*	809-0459	Bolts, Burner <sup>5</sup> / <sub>16</sub> " – 18x <sup>3</sup> / <sub>4</sub> " Hex Head Washer
*	823-3600	Support Assembly, Burner- <b>SM35G, SM40G</b> ( <i>Includes Burner Mounting Bracket &amp; Heat Shield</i> )
*	200-1129	Shield, Burner Heat- <b>SR42G</b> <i>not used after 12/10/04</i>
*	200-1330	Shield, Burner Heat- <b>SR52G, SM50</b> and <b>200-1331</b>
6	200-1615	Bracket, Manifold Mounting- <b>SR52G, SM50G</b>
*	200-1311	Bracket, Manifold Mounting- <b>SR38G, SR42G</b>
7	809-0428	Bolt, ¼" -20 x ½" Hex Head
8	809-0823	Nut, Nylock- ¼" -20
9	813-0705	Plug, Brass- ⅛" Square Head
10		<b>Orifice- Domestic/International</b>
*	810-2048	Orifice, Natural- #39 (2.53 mm)- <b>SR52G, SM50G,</b>
*	810-2132	Orifice, Natural- #37 (2.64 mm)- <b>SR38G</b>
*	810-2040	Orifice, Natural- #35 (2.80 mm)- <b>SR42G, SM35G, SM40G</b>
*	810-3097	Orifice, Natural- #35 (2.80 mm) .125-18 NPT - <b>SR42G</b> built after 4/07
*	810-2497	Orifice, LP- #55 (1.32 mm)- <b>SR52G, SR62G, SM20G, SM50G</b>
*	810-2059	Orifice, LP- #53 (1.51 mm)- <b>SR52G, SM50G,</b>
*	810-3102	Orifice, LP- #53 (1.51 mm) .125-18 NPT - <b>SR42</b> built after 4/07
*	810-2063	Orifice, LP- #52 (1.61 mm)- <b>SR38G</b>
*	810-2064	Orifice, LP- #51 (1.70 mm)- <b>SR42G, SM35G, SM40G</b>
*	810-3099	Orifice, LP- #51 (1.70 mm), .125-18 NPT - <b>SR42G</b> built after 4/07
*	810-2400	Orifice, LP- #16 (.016)- Pilot <b>SR52</b>
*		<b>Orifice- CE Only</b>
*	810-2060	Orifice, G20-G25- (2.40 mm)- <i>All Millivolt Fryers in This Section</i>
*	810-3101	Orifice, G20-G25- (2.40 mm) .125-18 NPT - <b>SR42</b> built after 4/07
*	810-2059	Orifice, G31- (1.51 mm)- <i>All Millivolt Fryers in This Section</i>
*	810-3102	Orifice, G31- (1.51 mm) .125-18 NPT- <b>SR42</b> built after 4/07
11	823-3618	Manifold, Gas- <b>SR52G, SM50G</b>
*	810-2034	Manifold, Gas- <b>SR38G, SR42G</b>
*	810-3006	Manifold, Gas- <b>SR42G</b> built after 4/07
*	823-3619	Manifold, Gas- <b>SM35G, SM40G</b>

\* Not Illustrated

**DEAN MILLIVOLT GAS FRYERS  
CHAPTER 2: PARTS LIST**

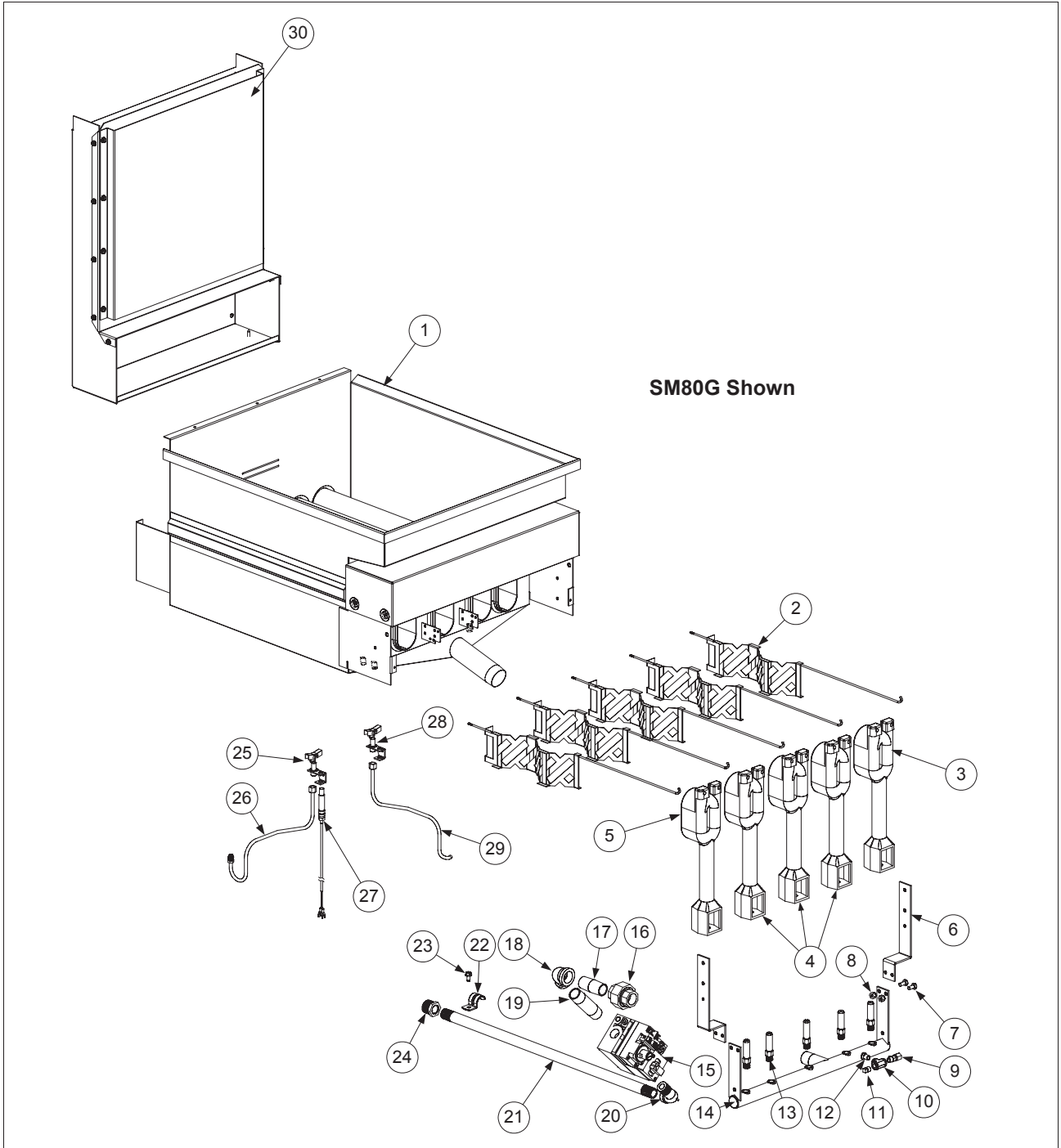
**2.4.2 SR Series, SM35G, SM40G and SM50G Systems (cont.)**

ITEM	PART #	COMPONENT
		<b>Gas Valve and Related Plumbing- SM50G – Plumbing Will Vary From Model to Model- Use the Following Parts As A Reference When Obtaining Parts For Systems in This Section Other Than SM50G</b>
12	813-0165	Elbow, Street- ½" NPT 90° BM
13	810-2036	Valve, Gas- Natural, Honeywell- <b>Domestic/International</b> ½" in x ¾" out
*	807-1603	Valve, Gas- Natural, Honeywell- ½" in x ½" out Started using Feb. 2003
*	807-3648	Valve, Gas- Natural, Honeywell- ¾" in x ¾" out Started using Feb. 2003 Export
*	807-3645	Valve, Gas- Natural, Robertshaw- ½" in x ¾" out
*	807-3549	Valve, Gas- LP, Honeywell- <b>Domestic/International</b>
*	807-1604	Valve, Gas- LP, Honeywell- ½" in x ½" out Started using Feb. 2003
*	807-3553	Valve, Gas- LP, Honeywell- ¾" in x ¾" out
*	810-1155	CE Adaptor Kit, Honeywell Valve
*	807-2122	Valve, Gas- Natural, Honeywell- <b>CE Only</b>
*	807-2121	Valve, Gas- LP, Honeywell- <b>CE Only</b>
*	807-4137	Valve, Gas- Natural, Honeywell- <b>Australia</b>
*	807-4138	Valve, Gas- LP, Honeywell- <b>Australia</b>
*	807-1846	Valve, Kit – Natural to Propane Conversion
14	813-0418	Nipple, ½" NPT x 17" BM- <b>SM50G</b>
*	813-0670	Nipple, ½" NPT x 19" BM ( <u>Measure To Confirm Length</u> )
*	813-0585	Nipple, ½" NPT x 20-½" BM ( <u>Measure To Confirm Length</u> )
*	813-0737	Nipple, ½" NPT x 21" BM ( <u>Measure To Confirm Length</u> )
15	813-0174	Union- ¾" NPT BM
16	813-0254	Nipple, ¾" NPT x 3" BM- <b>SM50G</b>
17	813-0066	Elbow- ¾" NPT 90° BM
18	813-0112	Nipple, ¾" NPT x 2" BM- <b>SM50G</b>
19	809-0805	Bolt, ¼"-20 x ½" Hex Head
20	810-2043	Clamp, Pipe- ½"
*	200-1450	Bracket, Gas-Supply Clamp Support (UFF-Equipped Systems)
21	813-0031	Bushing, ¾" NPT x ½" NPT BM
22	810-0703	Gas Line, Pilot Supply- ¼" x 17-½" (For <b>CE</b> use 810-1172 <b>23"</b> or 810-2602 <b>25"</b> )
23	810-2033	Thermopile- Non-CE
*	807-3565	Thermopile- <b>CE Only</b> ( Thermocouple 810-1152)
24	810-2032	Burner, Pilot- Natural (Use 106-0692SP for Assembly. Includes item 22, 23 and 24)
*	810-2155	Burner, Pilot- LP
25	106-1742SP	<b>Flue Assembly- SR52G, SM50G</b>
*	200-2872	Shield, Flue Heat- <b>SR52G, SM50G</b>
*	200-1343	Front, Flue Box- <b>SR52G, SM50G</b>
*	200-1350	Rear, Flue Box- <b>SR52G, SM50G</b>
*	12203	<b>Flue Assembly- SR38G</b>
*	12-0363	Shield, Flue Heat- <b>SR38G obsolete</b>
*	12-0362	Front, Flue Box- <b>SR38G obsolete</b>
*	12-0361	Rear, Flue Box- <b>SR38G obsolete</b>
*	106-0696SP	<b>Flue Assembly- SR42G</b>
*	200-1304	Front, Flue Box- <b>SR42G</b>
*	200-1303	Rear, Flue Box- <b>SR42G</b>
*	106-0954SP	<b>Flue Assembly- SM35G, SM40G</b>
*	200-1690	Shield, Flue Heat- <b>SM35G</b>
*	200-1701	Front, Flue Box- <b>SM35G</b>
*	200-1678	Rear, Flue Box- <b>SM35G</b>
*	449-41001	Garland SM50 Drop In Assembly- Natural
*	449-4100001	Garland SM50 Drop In Assembly- Propane

\* Not Illustrated

DEAN MILLIVOLT GAS FRYERS  
CHAPTER 2: PARTS LIST

2.4.3 SR62, SM60G and SM80G Systems



**DEAN MILLIVOLT GAS FRYERS  
CHAPTER 2: PARTS LIST**

**2.4.3 SR62, SM60G and SM80G Systems (cont.)**

ITEM	PART #	COMPONENT
1	823-3506SP	Frypot- M/S- <b>SM80G (After 10/99) obsolete use 823-3494SP</b>
*	823-3494SP	Frypot- S/S- <b>SM80G (After 10/99) 1 1/4" (Use 823-3396SP for 1 1/2")</b>
*	20004-3SK	Frypot- M/S- <b>SM80G (Prior To 10/99) obsolete use 826-1891</b>
*	826-1891	Frypot- S/S- <b>SM80G (Prior To 10/99)</b>
*	826-1819	Frypot- M/S- <b>SM60G obsolete use 826-1802</b>
*	826-1802	Frypot- S/S- <b>SM60G, SR62G (Use 823-3511SP for SM160G)</b>
2	823-3404	Diffuser, Burner Tube- <b>SM80G</b>
*	210-5215	Diffuser, Burner Tube- <b>SM60G, SR62G</b>
3	810-2150	Burner, Right- <b>SM60G, SM80G, SR62G</b>
4	810-2149	Burner, Center- <b>SM60G, SM80G, SR62G</b>
5	810-2151	Burner, Left- <b>SM60G, SM80G, SR62G</b>
*	200-2734	Bracket, Burner Mounting- <b>SM80G</b>
*	200-2738	Bracket, Burner Mounting- <b>SM60G, SR62G</b>
*	200-2707	Shield, Burner Heat- <b>SM80G</b>
*	200-2746	Shield, Burner Heat- <b>SM60G, SR62G</b>
6	200-1314	Bracket, Manifold Mounting- <b>SM80G</b>
*	200-1615	Bracket, Manifold Mounting- <b>SM60G, SR62G</b>
7	809-0428	Bolt, 1/4"-20 x 1/2" Hex Head
8	809-0823	Nut, Nylock- 1/4"-20
9	810-2138	Valve, Trailing Pilot- <b>SM60G, SM80G, SR62G adjustment valve</b>
10	813-0642	Tee, 1/8" NPT
11	813-0705	Plug, Brass- 1/8" Square Head
12	813-0643	Nipple, 1/8" NPT x Close BM
13		<b>Orifice- Domestic/International</b>
*	810-2062	Orifice, Natural- #38 (2.58 mm)- <b>SM80G</b>
*	810-2048	Orifice, Natural- #39 (2.53 mm)- <b>SM60G, SR62G</b>
*	810-2063	Orifice, LP- #52 (1.61 mm)- <b>SM80G, SR62G (Australia)</b>
*	810-2059	Orifice, LP- #53 (1.51 mm)- <b>SM60G, SR62G</b>
*		<b>Orifice- CE Only</b>
*	810-2060	Orifice, G20-G25- (2.40 mm)- <u>All Millivolt Fryers in This Section</u>
*	810-2059	Orifice, G31- (1.51 mm)- <u>All Millivolt Fryers in This Section</u>
14	823-3617	Manifold, Gas- <b>SM60G, SM80G, SR62G</b>
15	810-2036	Valve, Gas- Natural, Honeywell- <b>Domestic/Intl 1/2" in x 3/4" out</b>
*	807-2122	Valve, Gas- Natural, Honeywell- <b>CE Only</b>
*	807-3648	Valve, Gas- Natural and MFG, Honeywell 3/4" in x 3/4" out (Export)
*	807-3645	Valve, Gas- Natural, Robertshaw MV 1/2" in x 3/4" out
*	807-3549	Valve, Gas- LP, Honeywell- <b>Domestic/Intl</b>
*	807-2121	Valve, Gas- LP, Honeywell- <b>CE Only</b>
*	810-2399	Valve, Gas- LP, Robertshaw MV
16	813-0174	Union- 3/4" NPT BM
17	813-0635	Nipple, 3/4" NPT x 2-1/2" BM
18	813-0066	Elbow- 3/4" NPT 90° BM
19	813-0743	Nipple, 3/4" NPT x 3-1/2" BM
20	813-0165	Elbow, Street- 1/2" NPT 90° BM
21	813-0670	Nipple, 1/2" NPT x 19" BM ( <u>Measure To Confirm Length</u> )
*	813-0585	Nipple, 1/2" NPT x 20-1/2" BM ( <u>Measure To Confirm Length</u> )
*	813-0737	Nipple, 1/2" NPT x 21" BM ( <u>Measure To Confirm Length</u> )

\* Not Illustrated

**DEAN MILLIVOLT GAS FRYERS  
CHAPTER 2: PARTS LIST**

**2.4.3 SR62, SM60G and SM80G Systems (cont.)**

ITEM	PART #	COMPONENT
22	810-2043	Clamp, Pipe- 1/2"
23	809-0805	Bolt, Pipe Clamp- 1/4"-20 x 1/2" Hex
*	200-1450	Bracket, Gas-Supply Clamp Support (UFF-Equipped Systems)
24	813-0031	Bushing, 3/4" NPT x 1/2" NPT BM
25	810-2032	Burner, Pilot- Natural ( <i>Use 106-0692SP for Assembly</i> )
*	810-2155	Burner, Pilot- LP ( <i>Use 106-1696SP for Assembly</i> )
26	810-0703	Gas Line, Main Pilot Supply- 1/4" x 17-1/2"
*	810-1172	Gas Line, Pilot Supply- 1/4" x 23" <b>CE</b>
*	810-2602	Gas Line, Pilot Supply- 1/4" x 25" <b>CE</b>
27	810-2033	Thermopile- Non-CE
*	807-3565	Thermopile- <b>CE Only</b>
28	810-2032	Burner, Pilot- Natural & MFG (Also Used For Main Pilot)
*	106-0692	Burner, Pilot Assembly- Natural & MFG
*	810-2155	Burner, Pilot- LP (Also Used For Main Pilot)
29	812-0703	Gas Line, Trailing Pilot Supply- 1/4" x 17-1/2" (Cut To Length)
30	106-1442SP	<b>Flue Assembly- SM80G</b>
*	200-1316	Shield, Flue Heat- <b>SM80G</b>
*	200-1347	Front, Flue Box- <b>SM80G</b>
*	200-1349	Rear, Flue Box- <b>SM80G</b>
*	106-0997SP	<b>Flue Assembly- SM60G, SR62G</b>
*	200-1325	Shield, Flue Heat- <b>SM60G, SR62G</b>
*	200-1339	Front, Flue Box- <b>SM60G, SR62G</b>
*	200-1773	Rear, Flue Box- <b>SM60G, SR62G</b>

\* Not Illustrated

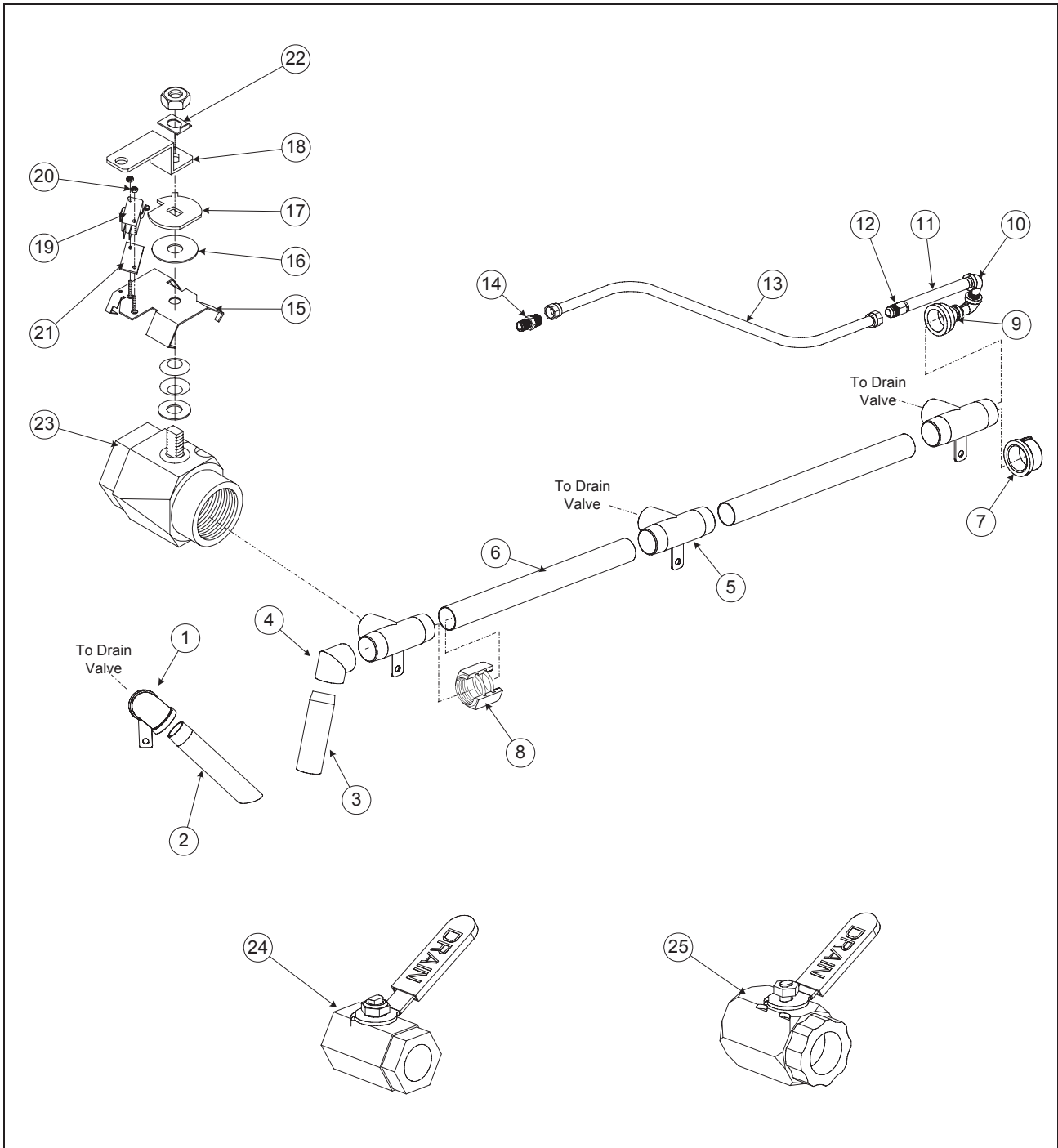


DEAN MILLIVOLT GAS FRYERS  
CHAPTER 2: PARTS LIST

2.5 Oil Drain Manifold Components

2.5.1 1½" Oil Drain Manifold, Drain Flush and Drain Valve Components\*

\*Typical components illustrated below. Components will vary according to system.



**DEAN MILLIVOLT GAS FRYERS  
CHAPTER 2: PARTS LIST**

**2.5.1 Oil Drain Manifold, Drain Flush and Drain Valve Components (cont.)**

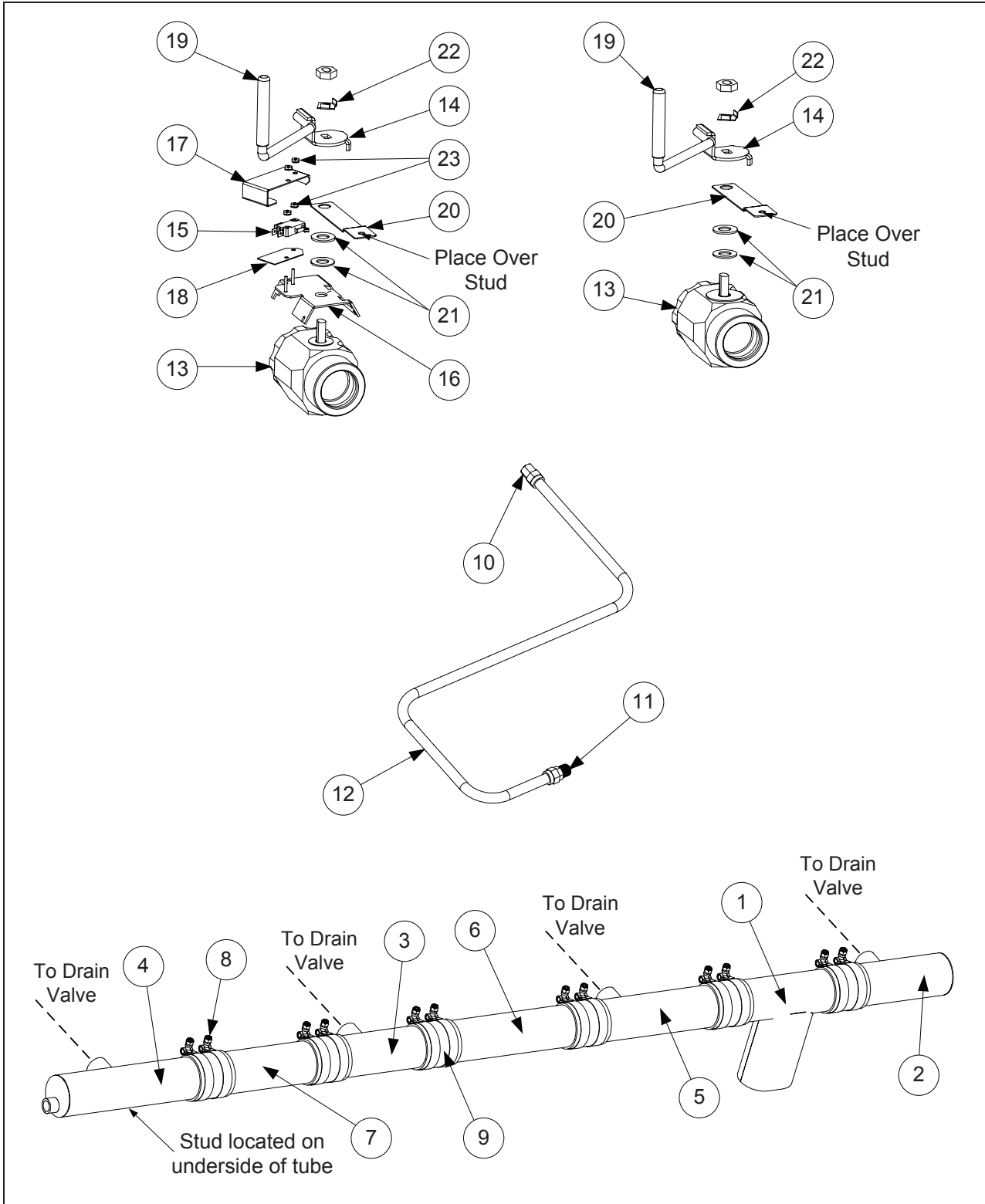
ITEM	PART #	COMPONENT
1	823-3565	Elbow, with Bracket (LH)- 1-¼"- UFF 50
*	823-3566	Elbow, with Bracket (RH)- 1-¼"- UFF 50
2	812-1524	Drain Pipe, Left Side (Use 823-3418 for Chili's)
3	813-0784	Drain Pipe, Right Side 1 ½" x 6"
4	813-0829	Elbow, 1-½" NPT 75°
5	813-0748	Tee, 1-½" NPT x 1-¼" BM With Handle Bracket
6	200-1827	Drain Manifold Tube- 1-½" x 13-¼"
7	813-0659	Pipe Cap, 1-½"
8	809-0884	Nut, Slip Joint- 1-½"
*	816-0544	O-ring (Slip-Joint Nut)
9	813-0686	Bell Reducer, ½" NPT x 1-½"
10	813-0165	Elbow, Street- ½" NPT 90°
11	813-0672	Nipple, ½" NPT x 8" BM
12	810-1669	Adapter, ⅝" O.D. x ½"- Female
13	810-1069	Flex Line, ⅝" x 29-½"
14	810-1668	Adapter, ⅝" O.D. x ½"- Male
<b>Drain Valve Components</b>		
15	106-1401	Bracket, Microswitch (Optional On SUFF/UFF Units)
16	200-1617	Washer, Drain Valve (Use Without Microswitch)
17	210-2029	Bracket, Activator- Microswitch (Also Used On Valves Without Microswitch As A Handle-Stop)
18	210-4727	Handle (Actuator), Drain Valve
*	823-3440	Handle, Push/Pull- Drain (With Cap)
*	809-0885	Washer, ⅜" x 1" x .083"
*	809-0843	Pin, Cotter
*	816-0547	Cap, Vinyl-Red
19	807-2104	Microswitch (Optional On SUFF/UFF Units)
20	809-0842	Nut, Nylock- #4-40 (Microswitch To Bracket)
21	816-0220	Insulation, Microswitch
22	200-1257	Retainer, Nut
23	810-2127	Drain Valve, 1-½" Full Port (With Washers & Nut)
24	810-2052	Drain Valve, 1-¼" (1" Standard Port)
*	810-2442	Handle, Valve Lever
*	810-1338	Drain Valve, 1" <b>SM20G, SR42G</b> see note below
*	210-3902	Handle, Valve Lever ( <b>For 810-1338 Only</b> )- <b>SM20G</b>
*	106-1417SP	Drain Valve Assembly 1" RH and LH
*	813-0138	Nipple, 1" NPT x Close (To Adapt To 1-¼" Extended Drain Nipple)
*	813-0716	Bushing, 1" NPT x 1-¼" BM (To Adapt To 1-¼" Extended Drain Nipple)
*	813-0406	Coupling, 1-¼" NPT x 2" (To Adapt To 1-¼" Extended Drain Nipple)
25	810-2126	Drain Valve, 1-¼" Full-Port (Use 106-2439 for Assembly)
*	812-1226SP	Nipple, Drain- 1-¼" Painted- <b>SM Series Fryers (use 813-0276 for SM20)</b>
*	813-0392	Nipple, Drain- 1-¼" NPT x 8" BM- <b>All SR Series Fryers except SR42 w/ 1"</b>
*	812-1681	Nipple, Drain- 1-¼" x 5" NPT
*	813-0870	Nipple, Drain- 1-¼" x 10" NPT
*	813-0669	Nipple, Drain- 1" x 8" (Use 812-1668 for 5"- <b>SR42</b> ) (Use 813-0605 for 9"- <b>SR62</b> )

\* Not Illustrated

Note: In Mar. 2003 SR42G went to 1" drain valves.

**DEAN MILLIVOLT GAS FRYERS**  
**CHAPTER 2: PARTS LIST**

**2.5.2 3" Oil Drain Manifold, Drain Flush and Drain Valve Components**



**DEAN MILLIVOLT GAS FRYERS  
CHAPTER 2: PARTS LIST**

**2.5.2 3" Oil Drain Manifold, Drain Flush & Drain Valve Components (cont.)**

<b>ITEM</b>	<b>PART #</b>	<b>COMPONENT</b>
1	823-4712	Tube, 3" Oval Dump
2	823-4681	Tube, 3" Right Drain (closed end)
3	823-4682	Tube, 3" Center Drain (open ends)
4	823-4844	Tube, 3" Left Drain (closed end)
5	823-5188	Tube, 3" Right Filter (open ends)
6	200-6603	Tube, 3" Joiner (11.5")
7	200-9365	Tube, 3" Joiner (8.63")
8	809-0969	Clamp, T-bolt
9	816-0625	Boot/Sleeve
	106-1726	<b>Flush Oil Drain Line</b>
10	810-1669	Adapter, Female 5/8" O.D. x 1/2" long
11	810-1668	Adapter, Male 5/8" O.D. x 1/2" long
12	810-1056	Flexline, 5/8" O.D. x 52.5" long
	106-3976	<b>Drain Valve Assembly, 1 1/2" Without Microswitch</b>
	106-3977	<b>Drain Valve Assembly, 1 1/2" With Microswitch</b>
13	810-2783	Drain Valve, 1 1/2" Full Port with O-ring
14	823-4734	Handle, Drain Valve Rotating
15	807-2104	Microswitch, CE Micro-roller Lever
16	106-1401	Microswitch Bracket Assembly
17	200-4402	Guard, Drain Microswitch
18	816-0220	Insulation, RF Switch
19	816-0547	Cap, Red Vinyl for Handle
20	200-6116	Strap, 1 1/2" (holds tube to valve via the stud)
21	200-1617	Washer, Drain Microswitch
22	200-1257	Retainer, Drain Valve
23	826-1366	Nut, 4-40 Keps Hex w/ External Teeth (Pkg. of 25)
*	816-0630	Cap, Vinyl (one per clamp, covers T-bolt threads)

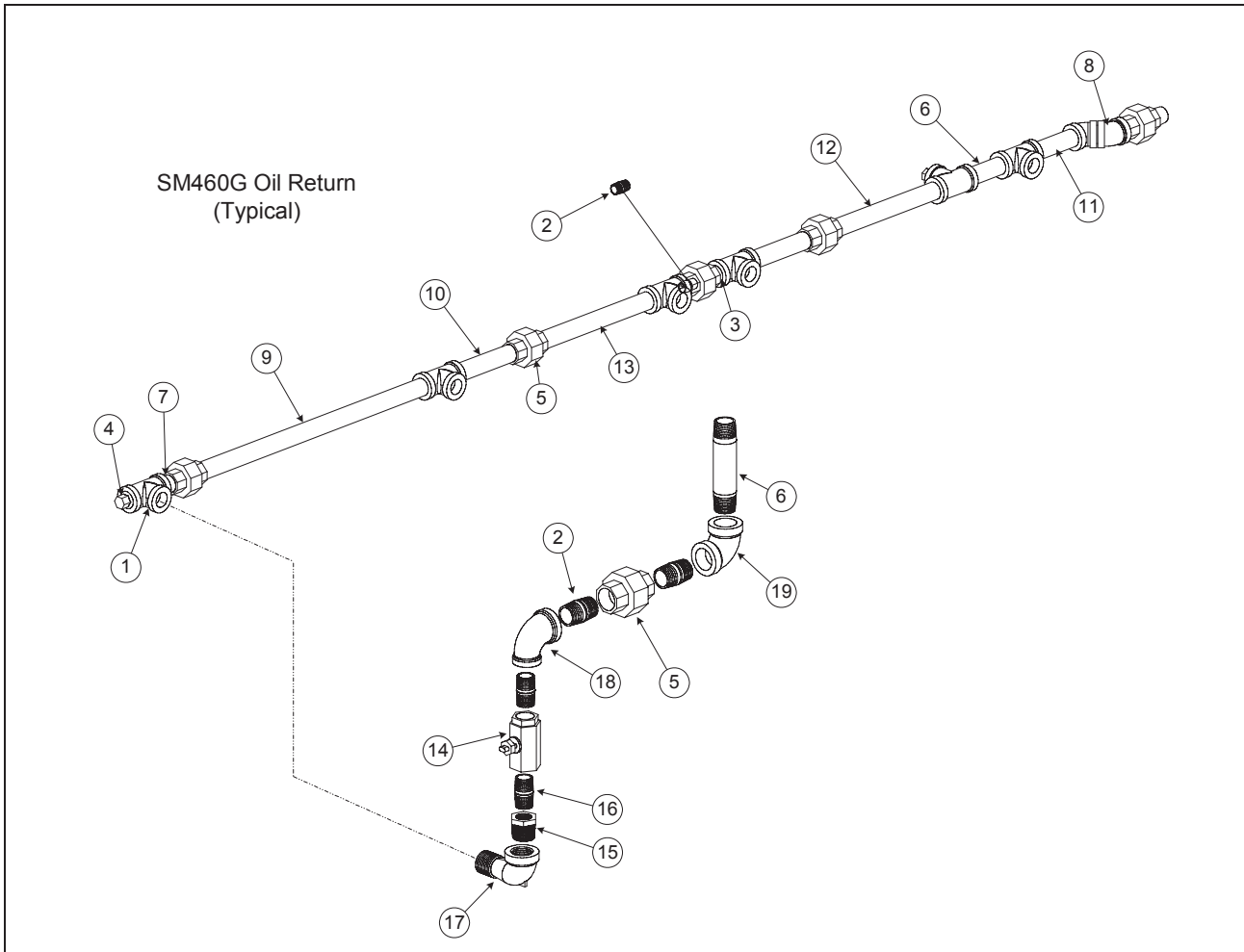
\* Not Illustrated

**DEAN MILLIVOLT GAS FRYERS  
CHAPTER 2: PARTS LIST**

**2.6 Oil Return Manifold Components**

**2.6.1 Oil Return Manifold Components; Fryers with 1½” Drains\***

\*Typical components illustrated below. Components will vary according to system.



ITEM	PART #	COMPONENT
1	813-0003	Tee, ½" x ½" x ½" BM
2	813-0022	Nipple, ½" x Close NPT BM
3	813-0087	Nipple, ½" x 1-½" NPT BM
4	813-0156	Plug, ½" NPT Hex Head BM
5	813-0173	Union, ½" NPT BM
6	813-0247	Nipple, ½" x 3-½" NPT BM
7	813-0298	Nipple, ½" x 2" NPT BM
8	813-0345	Elbow, ½"- 45°
9	813-0368	Nipple, ½" x 16" NPT BM
10	813-0646	Nipple, ½" x 5" NPT BM
11	813-0654	Nipple, ½" x 4" NPT BM
12	813-0672	Nipple, ½" x 8" NPT BM

**DEAN MILLIVOLT GAS FRYERS  
CHAPTER 2: PARTS LIST**

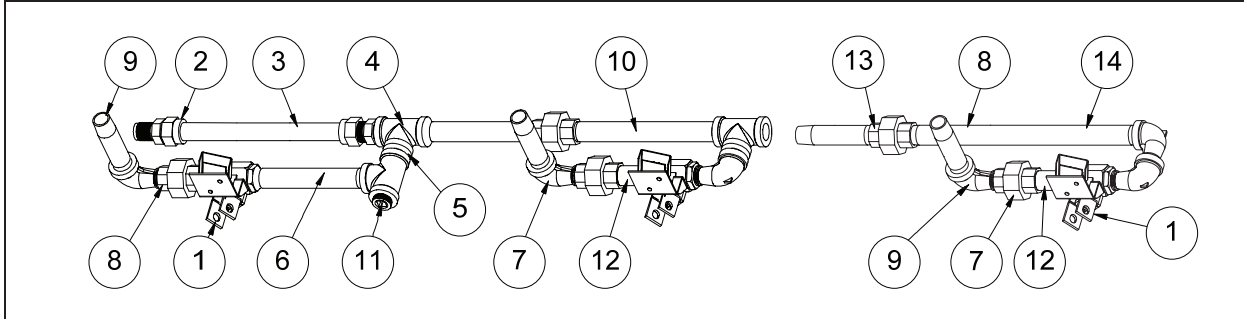
**2.6.1 Oil Return Manifold Components; Fryers with 1½” Drains (cont.)**

ITEM	PART #	COMPONENT
13	813-0673	Nipple, ½” x 8-½” NPT BM
14	810-2125	Oil Return Valve, ¾”
*	810-0051	Coupling, ½” NPT x 1- <sup>7</sup> / <sub>16</sub> ” to adapt return hose to valve
*	200-1143	Retainer, Oil Return Valve Nut
*	809-0877	Nut, Oil Return Valve
15	813-0006	Bushing, Hex- ½” x ¾” NPT BM
16	813-0625	Nipple, ¾” x Close NPT BM
17	813-0165	Elbow, Street- ½” x ½” NPT 90° BM
18	813-0634	Elbow, ½” x ¾” NPT 90° BM
19	813-0062	Elbow, ½” NPT 90° BM
*	106-2568SP	Wash Down Hose and Nozzle Assembly

\* Not Illustrated

**DEAN MILLIVOLT GAS FRYERS  
CHAPTER 2: PARTS LIST**

**2.6.2 Oil Return Manifold Components; Fryers with 3" Drains**



ITEM	PART #	COMPONENT
	106-4100	Oil Return Assembly – Middle
	106-4101	Oil Return Assembly – End
1	106-4006	Valve Assembly, 1/2" Oil Return (see Page 2-25)
*	106-3997	Valve Assembly (use with wand)
*	106-5516	Valve Assembly, 3-way Oil Return
2	810-1668	Adapter, Male 5/8" OD x 1/2"
3	810-2320	Flexline, 5/8" x 9.00" Long
4	813-0003	Tee, 1/2" x 1/2" x 1/2" BM
5	813-0022	Nipple, 1/2" x Close NPT BM
6	813-0096	Nipple, 1/2" x 6.00" NPT BM
7	813-0165	Elbow, Street 1/2" x 1/2" NPT 90° BM
8	813-0173	Union, 1/2" NPT
9	813-0247	Nipple, 1/2" x 3.50" NPT BM
10	813-0362	Nipple, 1/2" NPT x 7.50" BM
11	813-0463	Plug, 1/2" Counter Sink
12	813-0661	Nipple, 1/2" x 2.25" NPT BM
13	813-0654	Nipple, 1/2" x 4.00" NPT BM
14	813-0597	Nipple, 1/2" x 11.50" NPT BM
*	810-2125	Ball Valve, 3/8" Drain
*	813-0006	Bushing, 1/2" to 3/8" NPT BM Hex Reducing
*	813-0062	Elbow, 1/2" 90° BM
*	810-1067	Flexline, 8.50" Oil Return
*	813-0087	Nipple, 1/2" x 1.50" NPT BM
*	813-0460	Nipple, 1/2" x 3.00" NPT BM
*	813-0625	Nipple, 3/8" NPT x CL Black CLS
*	813-0672	Nipple, 1/2" x 8.00" NPT BM
*	813-0607	Nipple, 1/2" x 23.50" NPT BM
*	813-0099	Nipple, 1/2" x 7.00" NPT BM
*	813-0845	Nipple, 1/2" x 29.75" NPT BM
*	813-0646	Nipple, 1/2" x 5.00" NPT BM
*	813-0373	Nipple, 1/2" x 11.00" NPT BM
*	813-0298	Nipple, 1/2" x 2.00" NPT BM
*	813-0098	Nipple, 1/2" x 6.50" NPT BM
*	813-0742	Nipple, 1/2" x 5.50" NPT BM
*	813-0515	Nipple, 1/2" x 12.00" NPT BM
*	813-0265	Nipple, 1/2" x 2.50" NPT BM
*	813-0093	Nipple, 1/2" x 4.00" NPT BM

\* Not Illustrated

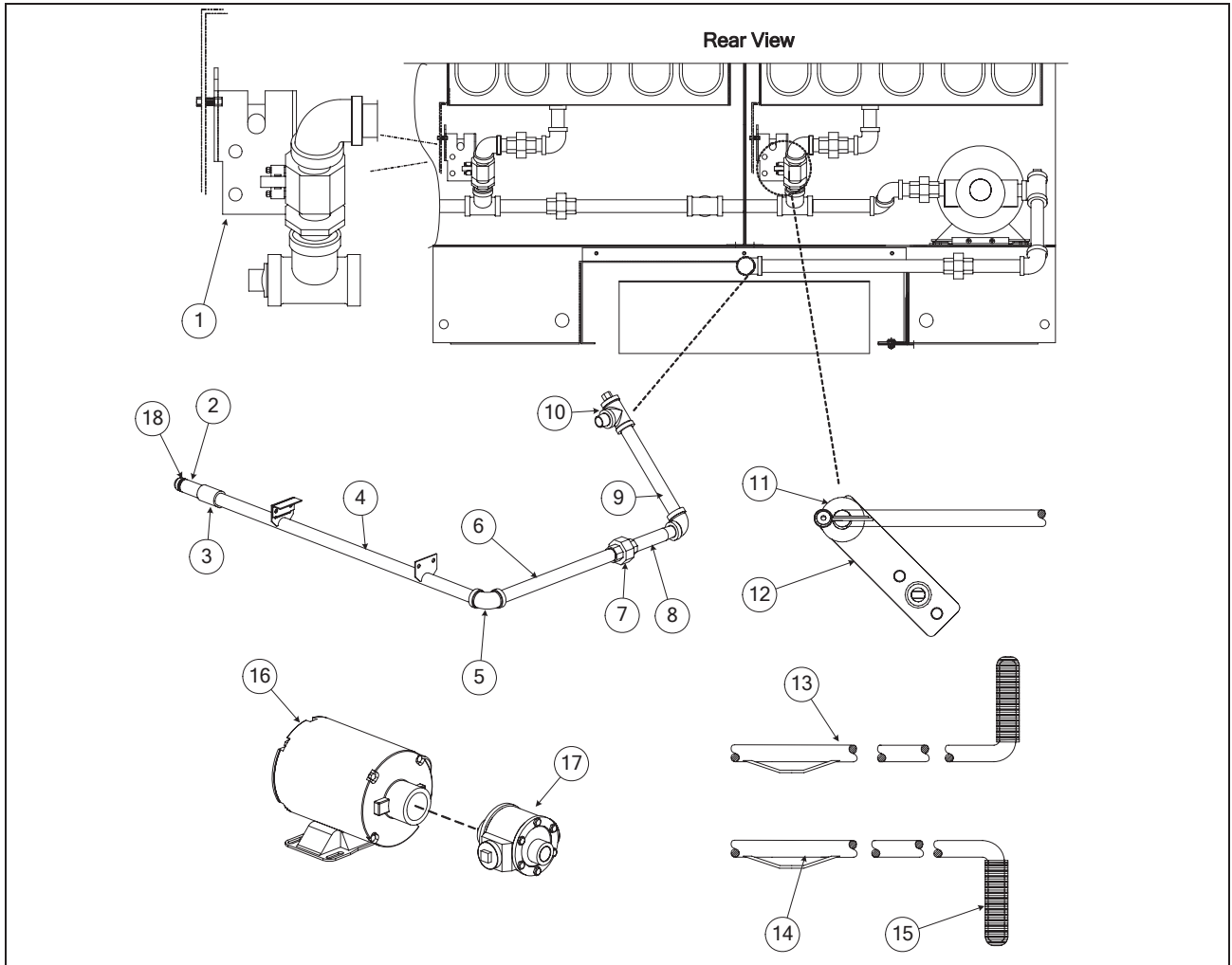


DEAN MILLIVOLT GAS FRYERS  
CHAPTER 2: PARTS LIST

2.7 Oil Return and Oil Flush Components

2.7.1 Oil Return and Oil Flush Components; Fryers with 1½” Drains\*

\*Typical components illustrated below. Components will vary according to system.



**DEAN MILLIVOLT GAS FRYERS  
CHAPTER 2: PARTS LIST**

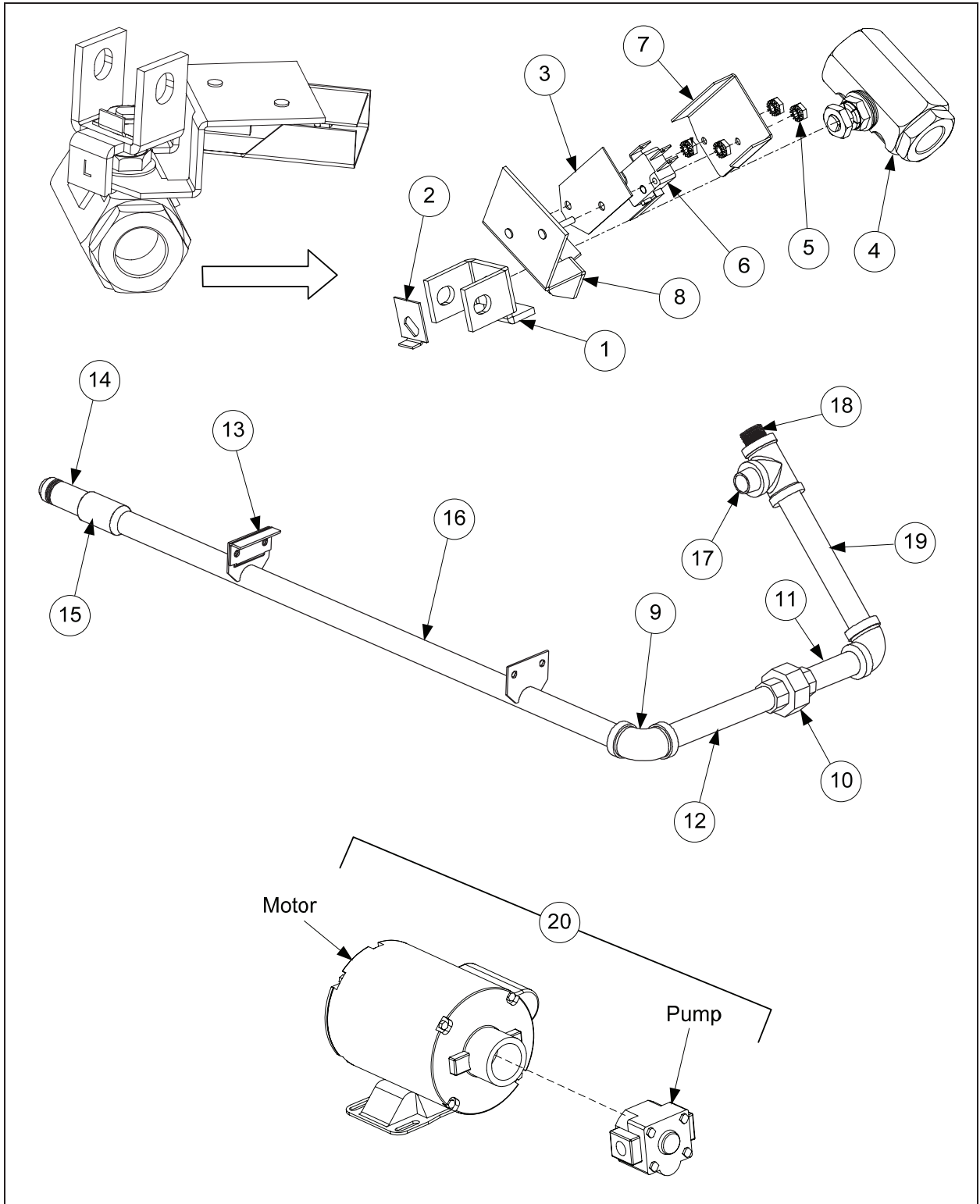
**2.7.1 Oil Return and Oil Flush Components; Fryers with 1½" Drains (cont.)**

ITEM	PART #	COMPONENT
1		<b>Microswitch Bracket Assembly, Oil Return</b>
*	201-1233	Bracket, Oil Return Microswitch- Left
*	202-1233	Bracket, Oil Return Microswitch- Right
*	810-2144	Spacer, Aluminum, 4-40- ¼" x 3/8"
*	807-2104	Microswitch, Oil Return
*	809-0846	Screw, 4-40 x 1" Slotted Head
*	809-0842	Nut, Nylock- 4-40
*	200-1341	Bracket, Microswitch Rod
*	809-0360	Screw, #8 x ¾" Hex Washer Slotted Head
*	809-0803	Bolt, ¼"-20 x ¾" Hex Head Grade 5
*	809-0823	Nut, Nylock, ¼"-20
*	809-0070	Nut, ¼"-20 Hex S/S
2	810-0697	Disconnect, Male- Suction Tube
3	813-0608	Coupling, Full- ½" NPT BM
4	823-3188	Suction Manifold Assembly
5	813-0062	Elbow, 90° BM
6	813-0515	Nipple, ½" x 12" NPT BM
7	813-0173	Union, ½" NPT BM
8	813-0251	Nipple, ½" x 4-½" NPT BM
9	813-0672	Nipple, ½" x 8" NPT BM
10		<b>Oil Suction Start Fitting</b>
*	813-0022	Nipple- ½" NPT x Close
*	813-0156	Plug, ½" NPT Hex Head
*	813-0003	Tee, ½" NPT BM
11	809-0885	Washer, ⅜" x 1" x .083"
*	809-0843	Pin, Cotter- Plated
12	823-3344	Handle (Actuator), Oil Return Valve
13	823-3187	Handle, Oil Return- Left Fryer-UFF System
14	823-3198	Handle, Oil Return- Right Fryer-UFF System
*	823-3481	Handle, Oil Flush Valve
15	816-0548	Cap, Oil Return Handle- Yellow
*	816-0549	Cap, Oil Flush Handle- Blue
16	810-2100	Motor, Pump- 120-230V
*	826-1987	Motor, Pump Assembly 5 GPM
17	810-2098	Pump, 8 GPM
*	810-2252	Pump, 5 GPM
*	210-1650	Oil Deflector, Oil Return
18	826-1392	O-Rings (Pkg. of 5)
*	106-2949SP	Line Assembly, Garland Pump Suction
*	KIT4678SP	Wash Down Hose Fittings Kit
*	807-3593	Power Cord
*	807-3611	Relay, Filter 24A DPDT

\* Not Illustrated

DEAN MILLIVOLT GAS FRYERS  
CHAPTER 2: PARTS LIST

2.7.2 Oil Return and Oil Flush Components; Fryers with 3" Drains



**DEAN MILLIVOLT GAS FRYERS  
CHAPTER 2: PARTS LIST**

**2.7.2 Oil Return and Oil Flush Components; Fryers with 3” Drains (cont.)**

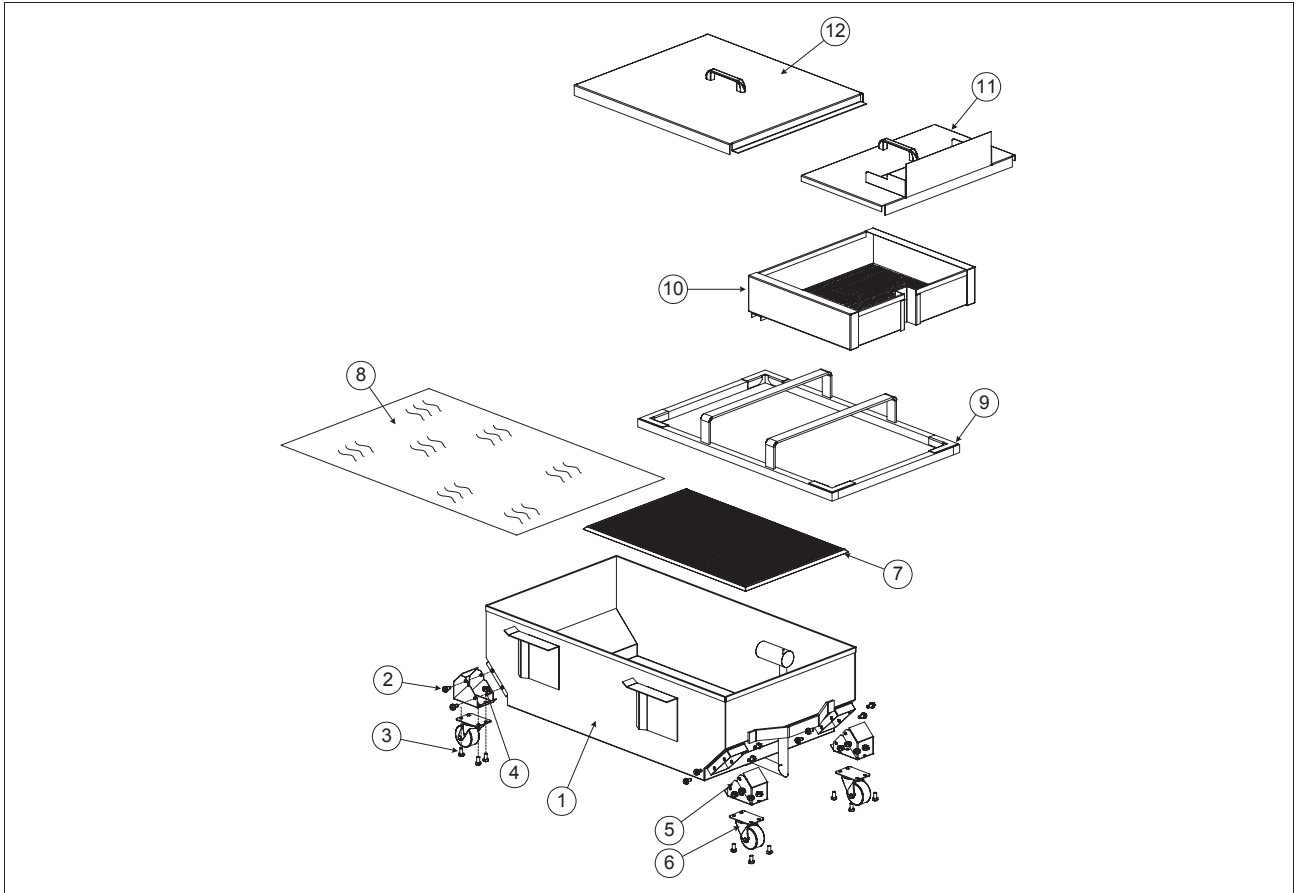
ITEM	PART #	COMPONENT
	106-4006	<b>Microswitch Bracket Assembly, Oil Return</b>
1	901-2772	Handle, RF Left
2	900-2935	Retainer, Nut
3	816-0220	Insulation, RF Switch
4	810-0278	Ball Valve, ½” Oil Return
5	826-1366	Nut, 4-40 Keps hex w/ External Teeth (Pkg. of 25)
6	807-2103	Microswitch, Straight Lever (CE)
7	200-6806	Cover, Safety Switch
8	106-3962	Bracket Assembly, RF Switch
	106-1225	<b>Oil Suction Assembly</b>
9	813-0062	Elbow, 90° BM
10	813-0173	Union, ½” NPT 150# BM
11	813-0654	Nipple, TBE ½” NPT x 4” BM
12	813-0674	Nipple, TBE ½” NPT x 7.25” BM
13	200-1230	Bracket, Front male Manifold
	106-0774	<b>Suction Manifold Assembly</b>
14	810-0697	Disconnect, Male Suction Tube
15	813-0608	Coupling, ½” NPT BM Full
16	823-3188	Suction Manifold
	106-0858	<b>Oil Suction Start Fitting</b>
17	813-0022	Nipple, ½” NPT Close
18	813-0463	Plug, ½” Counter Sink
19	813-0003	Tee, ½” NPT BM
*	210-8790	Bracket, Oil Return/ Flush Retainer
*	200-8929	Handle, Oil Return
*	200-9850	Handle, Oil Return (Application Series “DF” Fryers)
*	816-0548	Cap, Oil Return Handle, Yellow
*	816-0549	Cap, Oil Return Handle, Blue
20	810-2097	Motor/Pump Combo, 120-230V

\* Not Illustrated

**DEAN MILLIVOLT GAS FRYERS  
CHAPTER 2: PARTS LIST**

**2.8 Under Fryer Filter (UFF) Components**

**2.8.1 SM50 and SM60 Series Fryers (Except IHOP)**

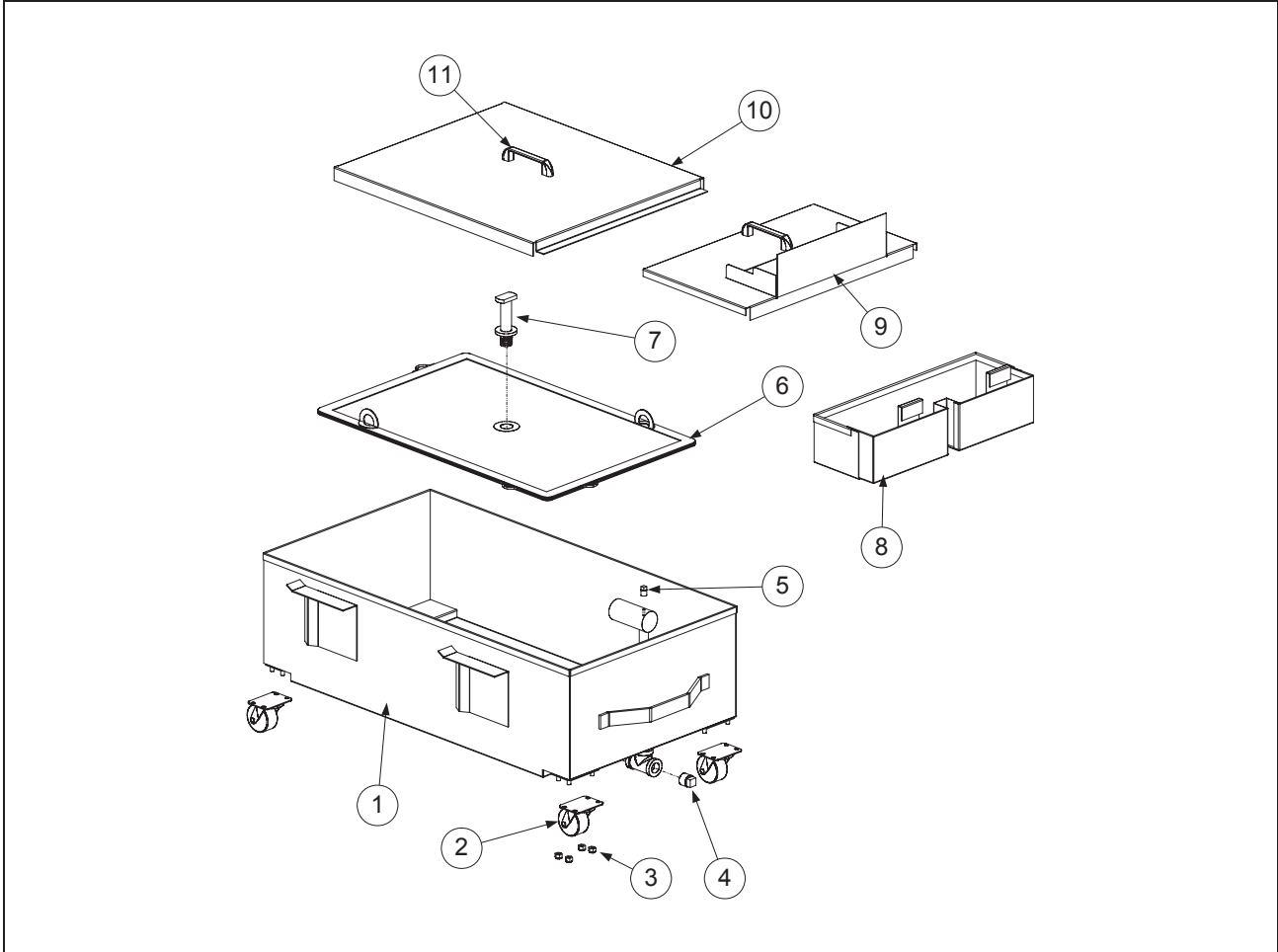


ITEM	PART #	COMPONENT
1	823-3576	Filter Pan- UFF 50
*	106-2115SP	Filter Pan Assembly- UFF 50
*	106-0749SP	Filter Pan Assembly- UFF 60
2	809-0805	Screw, 1/4"-20 x 1/2"
3	809-0428	Bolt, 1/4"-20 x 1/2" Steel
4	809-0820	Nut, Oval Locking- 1/4"-20
5	823-4794	Insert, Caster
6	810-2805	Caster, 2"-Swivel
7	823-3574	Support Grid (Bottom Pan Screen)- UFF 50
*	823-3365	Support Grid (Bottom Pan Screen)- UFF 60
8	803-0289	Filter Paper, 22" x 34"- UFF 50/60 (100 Sheets)
9	823-3573	Hold-down Ring, Weighted- UFF 50
*	823-3361	Hold-down Ring, Weighted- UFF 60
10	823-4320	Crumb Basket, UFF 50/60
11	106-0752SP	Lid Assembly, Front- UFF 50/60
12	106-1755SP	Lid Assembly, Rear- UFF 50
*	106-0753SP	Lid Assembly, Rear- UFF 60

\* Not Illustrated

## DEAN MILLIVOLT GAS FRYERS CHAPTER 2: PARTS LIST

### 2.8.2 SM50 Series Fryers, IHOP UFF 50 with Filter Leaf

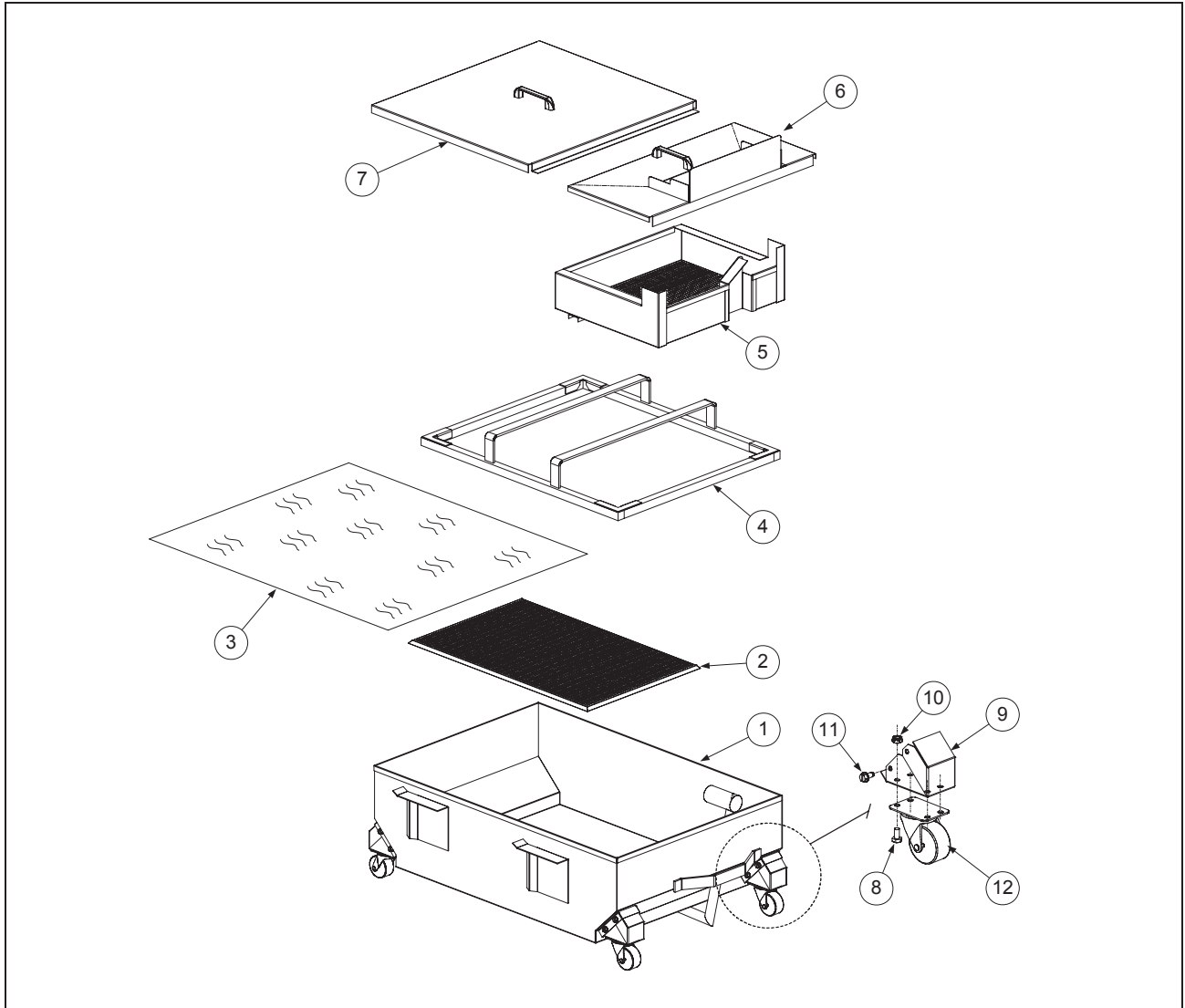


ITEM	PART #	COMPONENT
	106-2109SP	Filter Pan Assembly- UFF 50 IHOP (includes items 1-5)
1	823-3703	Filter Pan- UFF 50 IHOP
2	810-2805	Caster, 2"-Swivel
3	809-0823	Nut, Nylock ¼"-20
4	813-0336	Plug, Pipe- S/S- ½" NPT
5	813-0679	Plug, ⅜" S/S Square Head
6	810-2350	Leaf, Filter- UFF 50 IHOP
7	810-2351	Handle, Filter Leaf Tee Fitting
8	823-3872	Crumb Basket, UFF 50 IHOP
9	106-0752SP	Lid Assembly, Front- UFF 50
10	106-0753SP	Lid Assembly, Rear- UFF 60
11	810-0180	Handle, Filter Lid- Front & Back
*	809-0191	Washer, ¼" Lock- Filter Lid Handle
*	809-0918	Screw, #10-24 x ½"- Filter Lid Handle

\* Not Illustrated

## DEAN MILLIVOLT GAS FRYERS CHAPTER 2: PARTS LIST

### 2.8.3 SM80 Series Fryers



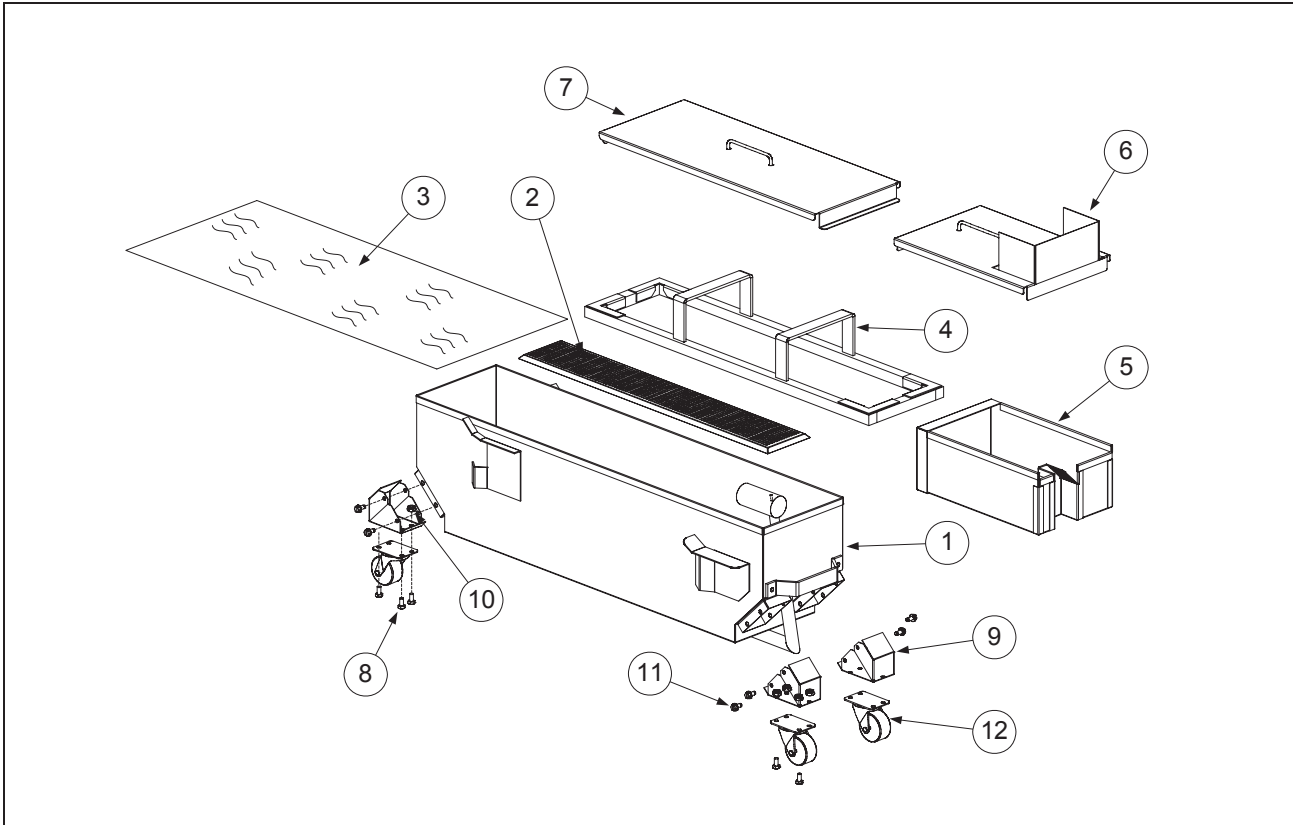
ITEM	PART #	COMPONENT
1	106-1584SP	Filter Pan, UFF 80
2	823-3365	Support Grid (Bottom Pan Screen) (Use 823-4938 for Chili's)
3	803-0303	Filter Paper, 26" x 34" (100 Sheets)
4	823-3439	Hold-down Ring, Weighted
5	823-3443	Crumb Basket
6	106-1587SP	Filter Pan Cover, Front
7	106-1588SP	Filter Pan Cover, Back
8	809-0428	Bolt, 1/4"-20 x 1/2" Steel
9	823-4794	Insert, Caster
10	809-0820	Nut, Oval Locking- 1/4" -20
11	809-0805	Screw, 1/4"-20 x 1/2"
12	810-2805	Caster, 2"



**DEAN MILLIVOLT GAS FRYERS  
CHAPTER 2: PARTS LIST**

**2.9 Single Under Fryer Filter (SUFF) Components**

**2.9.1 SM50 Series Fryers**

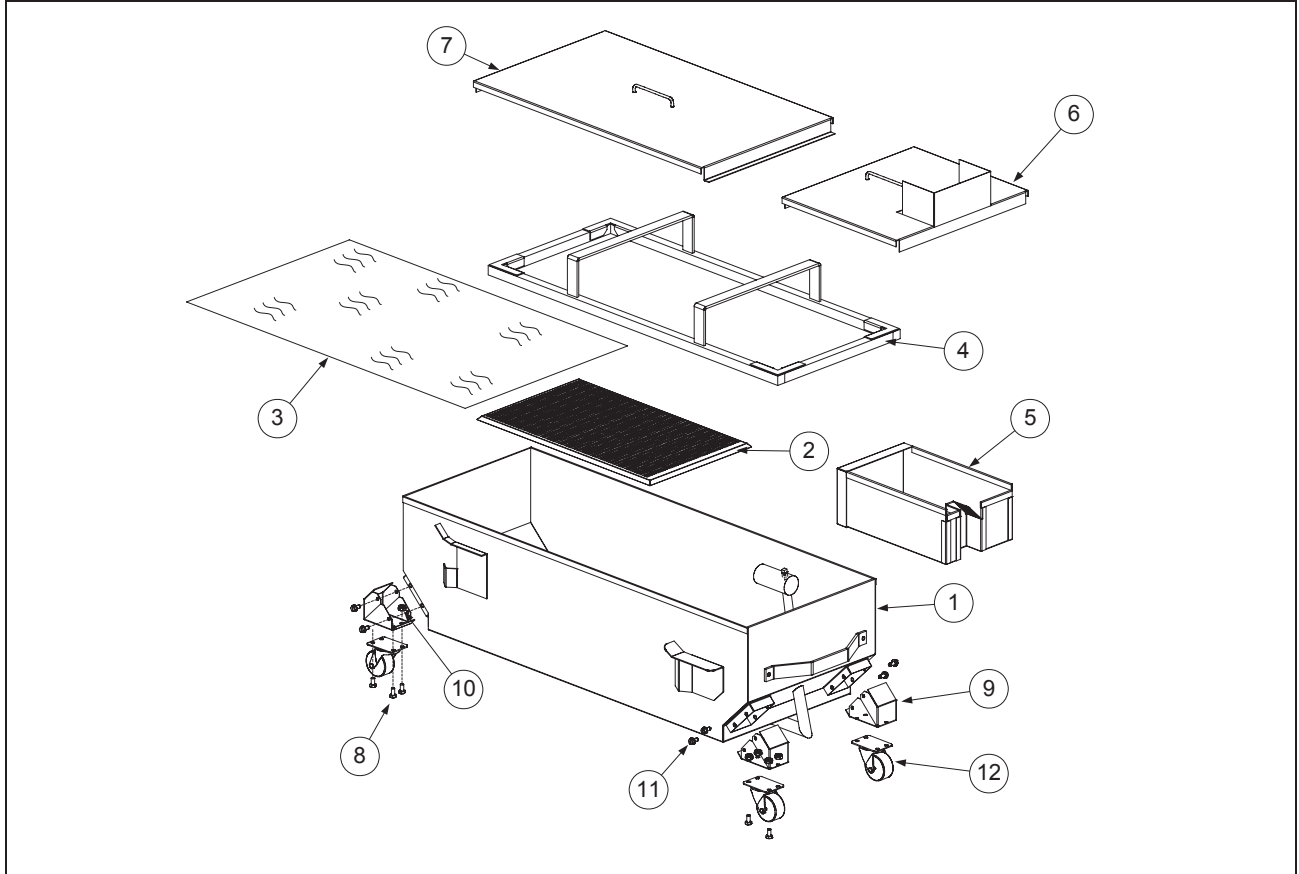


ITEM	PART #	COMPONENT
	106-2257SP	Filter Pan Assembly SUFF 50
1	823-3796	Filter Pan, SUFF 50
*	813-0684	Plug, Hex Socket, 3/8" NPT
*	813-0679	Plug, 1/8" S/S Square Head (Female Disconnect)
2	823-3790	Support Grid (Bottom Pan Screen)
3	803-0317	Paper, Filter- 8-1/4" x 25-3/4"
4	823-3795	Hold-down Ring, Weighted
5	823-3736	Crumb Basket
6	823-3797	Filter Pan Cover, Front
7	823-3798	Filter Pan Cover, Back
8	809-0428	Bolt, 1/4" -20 x 1/2" Steel
9	823-4794	Insert, Castor
10	809-0820	Nut, Oval Locking- 1/4" -20
11	809-0805	Screw, 1/4" -20 x 1/2"
12	810-2805	Castor, 2"

\* Not Illustrated

## DEAN MILLIVOLT GAS FRYERS CHAPTER 2: PARTS LIST

### 2.9.2 SM60 and SM80 Series Fryers



ITEM	PART #	COMPONENT
1	823-3774	Filter Pan, SUFF 60 (Use 106-2228SP for Assembly)
*	823-3821	Filter Pan, SUFF 80 (Use 106-2381SP for Assembly)
*	813-0684	Plug, Hex Socket, 3/8" NPT
*	813-0679	Plug, 1/8" S/S Square Head (Female Disconnect)
2	823-3768	Support Grid (Bottom Pan Screen) SUFF 60/80
3	803-0289	Paper, Filter- 22" x 34" - SUFF 60/80
4	823-3768	Hold-down Ring, Weighted- SUFF 60
*	823-3849	Hold-down Ring, Weighted- SUFF 80
5	823-3736	Crumb Basket- SUFF 60/80
6	823-3766	Filter Pan Cover, Front- SUFF 60
*	823-3739	Filter Pan Cover, Front- SUFF 80
7	823-3767	Filter Pan Cover, Back- SUFF 60
*	823-3741	Filter Pan Cover, Back- SUFF 80
8	809-0428	Bolt, 1/4" -20 x 1/2" Steel
9	823-4794	Insert, Caster
10	809-0820	Nut, Oval Locking- 1/4"-20
11	809-0805	Screw, 1/4" -20 x 1/2"
12	810-2805	Caster, 2"

\* Not Illustrated